

Electric Strikes

ASSA ABLOY



Contents

Standard Electric Strikes

E-line – Series of Standard Electric Door Strikes	3.1
17RR – Series of Electric Door Strikes with Monitoring Contact	3.1

Electric Strikes for Fire Doors

142 – Series of Special Electric Door Strikes for Fire Resistant Doors	3.2
--	-----

Flat Design Electric Strikes

19 – Series of Flat Design Electric Door Strikes (16.5 mm)	3.2
--	-----

Electric Strikes for Fire Resistant/Emergency Exit, Ventilation and Security Doors

131/331 – Series of Special Electric Door Strikes for Fire Resistant/ Emergency Exit, Ventilation and Security Doors	3.3
---	-----

Special Electric Strikes

12 – Series of Special Waterproof Electric Door Strikes for Exterior Doors	3.4
--	-----

Special Electric Strikes

914 – Series of Special Electric Door Strikes for Tempered Glass Doors	3.5
9314VGL – Series of Special Electric Door Strikes for Tempered Glass Doors without Frames	3.6
14.400 – Series of Special Electric Door Strikes for Doors in Escape Routes (with panic bars “89” and “90” series)	3.7

Spring Loaded Latch Bolts

Spring Loaded Latch Bolts	3.7
---------------------------------	-----

Striking Plates for effeff Strikes

Striking Plates for effeff Strikes	3.8
--	-----

E-line – Series of Standard Electric Door Strikes

TECHNICAL DETAILS

Break-in resistance:
3,500 N (356kg)

Body material:
zinc – die casting

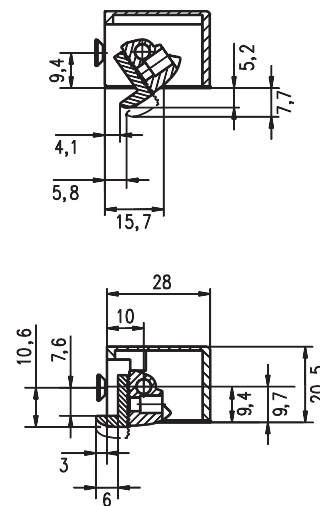
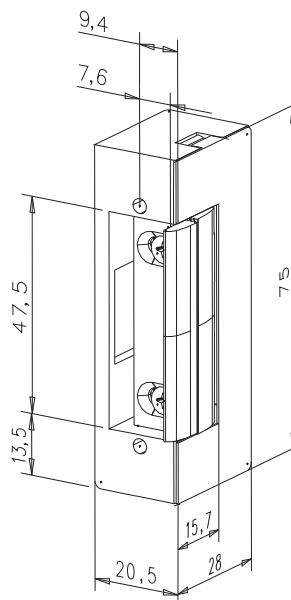
Keeper material:
zinc – die casting, brass

Operating temperature range:
-15°C – +40°C

Certification:
EN 12209 – Class 2
P ENV 1627 – Class 2



E-line – Series of standard electric door strikes



Application

- Universal door strikes.
- Symmetrical design.
- FaFix (adjustable keeper) as a standard item.
- Fully reversible for both right-hand and left-hand DIN doors when turned by 180 degrees.
- Can be used with any common striking plate.

Strike Versions

- **Open when power is applied, blocked when power is disconnected** Designation: E7 Coils: D1, E4, F4
- **Open when power is applied, blocked when power is disconnected + mechanical release** Series: E7E Coils: D1, E4, F4
- **With release for a single passing on electric pulse** Series: E7A Coils: D1, E4, F4
- **Blocked when power is applied, open when power is disconnected (reversed strike)** Series: E7R Coils: E9, F9

Electrical Specifications

Note:
The E-line strikes can't be used in fire resistant doors due to used materials not meeting the specifications for thermal resistance (to 1,000°C) required for fire resistant doors.

Type	Description	Supply voltage (V)	Coil resistance (Ohm)	Current consumption AC (mA)	Current consumption DC (mA)
E7-D1	Strike 6 – 12 V AC/DC	6 – 12 V AC/DC (12V operation)	9.1	1,100/5 sec	1,300/5 sec
E7-E4	Low consumption strike 12 V DC	12 V DC	44	–	270
E7-F4	Low consumption strike 24 V DC	24 V DC	200	–	120
E7E-D1	Strike 6 – 12 V AC/DC with mechanical release	6 – 12 V AC/DC (12V operation)	9.1	1,100/5 sec	1,300/5 sec
E7E-E4	Low consumption strike 12 V DC with mechanical release	12 V DC	44	–	270
E7E-F4	Low consumption strike 24 V DC with mechanical release	24 V DC	200	–	120
E7A-D1	Strike 6 – 12 V AC/DC with release for a single passing	6 – 12 V AC/DC (12V operation)	9.1	1,100/5 sec	1,300/5 sec
E7A-E4	Low consumption strike 12 V DC with release for a single passing	12 V DC	44	–	270
E7A-F4	Low consumption strike 24 V DC with release for a single passing	24 V DC	200	–	120
E7R-E9	Low consumption reversed strike 12 V DC	12 V DC	51	–	235
E7R-F9	Low consumption reversed strike 24 V DC	24 V DC	160	–	150

17RR – Series of Electric Door Strikes with Monitoring Contact

TECHNICAL DETAILS

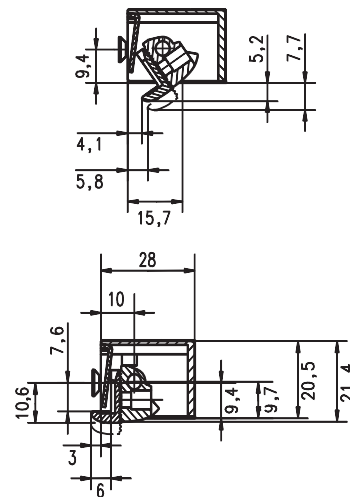
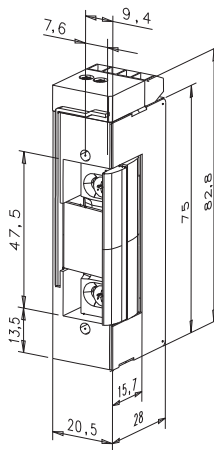
Break-in resistance:
3,500 N (356 kg)

Body material:
zinc – die casting

Keeper material:
zinc – die casting, brass

Operating temperature range:
-15°C – +40°C

Certification:
EN 12209 – Class 2
P ENV 1627 – Class 2



17RR – Series of electric door strikes with monitoring contact

Application

- Universal door strikes with latch bolt monitoring contact.
- Monitoring contact is activated by the latch bolt (indicates whether the door is open/closed).
- Symmetrical design.
- FaFix (adjustable keeper) as a standard item.
- Fully reversible for both right-hand and left-hand DIN doors when turned by 180 degrees.
- Can be used with any common striking plate.

Strike Versions

- **Open when power is applied, blocked when power is disconnected**
Series: 17RR Coils: D1, E4, F4
- **Open when power is applied, blocked when power is disconnected + protection diode** Series: 1705RR Coils: E4, F4
- **Blocked when power is applied, open when power is disconnected (reversed strike)** Series: 37RR Coils: E9, F9
- **Blocked when power is applied, open when power is disconnected (reversed strike) + protection diode** Series: 3705RR Coils: E9, F9

Electrical Specifications

Note:
The 17RR series strikes can't be used in fire resistant doors due to used materials not meeting the specifications for thermal resistance (to 1,000°C) required for fire resistant doors.

Type	Description	Supply voltage (V)	Coil resistance (Ohm)	Current consumption AC (mA)	Current consumption DC (mA)
17RR-D1	Strike 6 – 12 V AC/DC with monitoring	6 – 12 V AC/DC (6V operation)	9.1	550/5 sec	660/5 sec
17RR-D1	Strike 6 – 12 V AC/DC with monitoring	6 – 12 V AC/DC (12V operation)	9.1	1 100/5 sec	1 300/5 sec
17RR-E4	Low consumption strike 12V DC with monitoring	12V DC	44	–	270
17RR-F4	Low consumption strike 24V DC with monitoring	24V DC	200	–	120
1705RR-E4	Low consumption strike 12V DC with monitoring + diode	12V DC	44	–	270
1705RR-F4	Low consumption strike 24V DC with monitoring + diode	24V DC	200	–	120
37RR-E9	Low consumption reversed strike 12V DC with monitoring	12V DC	51	–	235
37RR-F9	Low consumption reversed strike 24V DC with monitoring	24V DC	160	–	150
3705RR-E9	Low consumption reversed strike 12V DC with monitoring + diode	12V DC	51	–	235
3705RR-F9	Low consumption reversed strike 24V DC with monitoring + diode	24V DC	160	–	150

142 – Series of Special Electric Door Strikes for Fire Resistant Doors

TECHNICAL DETAILS

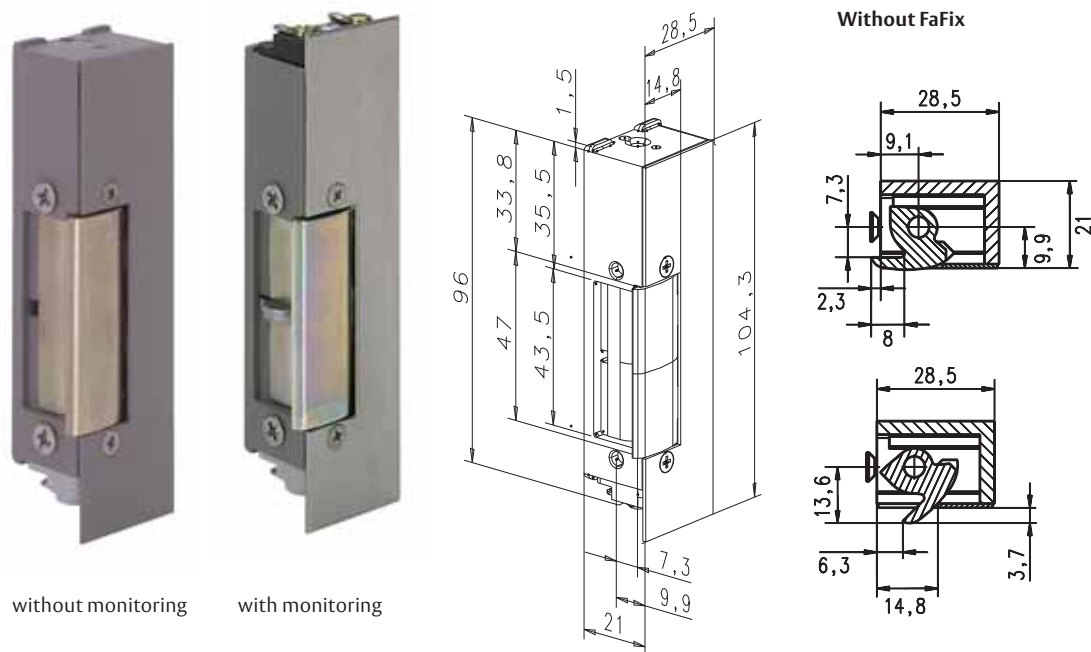
Break-in resistance:
10,000 N (1,019 kg) without
FaFix
6,500 N (662 kg) with FaFix

Body material:
steel casting

Keeper material:
steel

**Operating temperature
range:**
-15°C – +40°C

Certification for using in fire
doors.



142 – Series of special electric door strikes for fire resistant doors

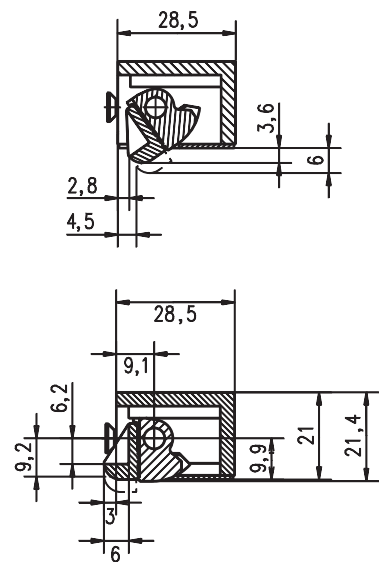
Note:
The 142 series strikes can be
used in fire resistant doors.
Used materials meet
the specifications for
thermal resistance (to
1,000°C) required for fire
resistant doors.

Application

- Special door strikes for fire resistant doors.
- Standard: without FaFix = without adjustable keeper.
- Optional: with FaFix = adjustable keeper.
- RR version provides for latch bolt monitoring.
- Strike body is made from a steel casting.
- Fully reversible for both right-hand and left-hand DIN doors when turned by 180 degrees.
- Model 1422 must be used when horizontal mounting is required!

Strike Versions:

- **Open when power is applied, blocked when power is disconnected**
Series: 142 U Coil: Q3.
- **Open when power is applied, blocked when power is disconnected + monitoring contact**
Series: 142 UR Coil: Q3.



Electrical Specifications

Type	Description	Supply voltage (V)	Coil resistance (Ohm)	Current consumption AC (mA)	Current consumption DC (mA)
142 U-Q3	Low consumption strike 12 /24V AC/DC	12/24V AC/DC	57,5/230	130/70/5 sec	105/210
142 UR-Q3	Low consumption strike 12 /24V AC/DC with monitoring	12/24V AC/DC	57,5/230	130/70/5 sec	105/210

19 – Series of Flat Design Electric Door Strikes (16.5 mm)

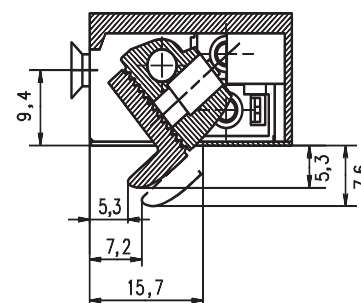
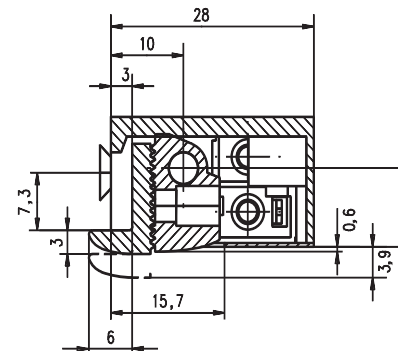
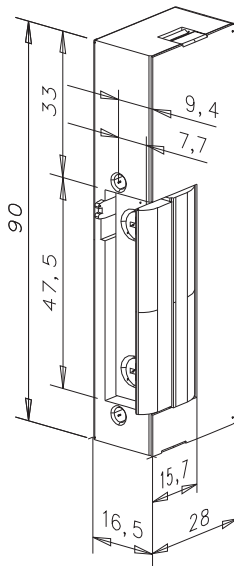
TECHNICAL DETAILS

Break-in resistance:
3,000 N (306 kg)

Body material:
zinc – die casting

Keeper material:
zinc – die casting, brass

Operating temperature range:
-15°C – +40°C



19 – Series of flat design electric door strikes (16.5 mm)

Application

- Flat design door strikes (16.5 mm).
- Symmetrical design.
- FaFix = adjustable keeper.
- Fully reversible for both right-hand and left-hand DIN doors when turned by 180 degrees.

Strike Versions

- **Open when power is applied, blocked when power is disconnected** Series: 19 Coils: D1, E3, F3
- **Open when power is applied, blocked when power is disconnected + protection diode** Series: 1905 Coils: E3, F3
- **With release for a single passing** Series: 29 Coils: D1
- **With release for a single passing + mechanical release** Series: 29E Coils: D1
- **Open when power is applied, blocked when power is disconnected + mechanical release** Series: 19E Coils: D1

Electrical Specifications

Note:
The 19 series strikes can't be used in fire resistant doors due to used materials not meeting the specifications for thermal resistance (to 1,000°C) required for fire resistant doors.

Type	Description	Supply voltage (V)	Coil resistance (Ohm)	Current consumption AC (mA)	Current consumption DC (mA)
19-D1	Strike 6 – 12V AC/DC	6 – 12V AC/DC (12V operation)	7.7	1 100/5 sec	1560/5 sec
19E-D1	Strike 6 – 12V AC/DC with mechanical release	6 – 12V AC/DC (12V operation)	7.7	1 100/5 sec	1560/5 sec
19-E3	Low consumption strike 12V AC/DC	12V AC/DC	60	130/5 sec	200
19-F3	Low consumption strike 24V AC/DC	24V AC/DC	235	70/5 sec	105
1905-E3	Low consumption strike 12V AC/DC with protection diode	12V DC	60	130/5 sec	200
1905-F3	Low consumption strike 24V AC/DC with protection diode	24V DC	235	70/5 sec	105
29-D1	Strike 6 – 12V AC/DC with release for a single passing	6 – 12V AC/DC (12V operation)	7.7	1 100/5 sec	1560/5 sec
29E-D1	Strike 6 – 12V AC/DC with release for a single passing and mechanical release	6 – 12V AC/DC (12V operation)	7.7	1 100/5 sec	1560/5 sec

131/331 – Series of Special Electric Door Strikes for Fire Resistant/Emergency Exit, Ventilation and Security Doors

TECHNICAL DETAILS

Break-in resistance:

15,000 N (1,529 kg) without
FaFix

10,000 N (1,019 kg) with
FaFix

Body material:

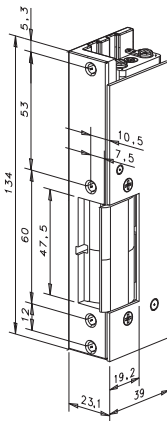
steel casting

Keeper material:

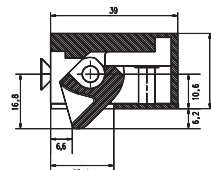
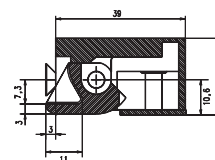
steel

Operating temperature range:

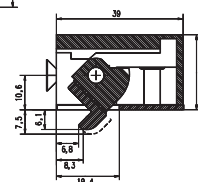
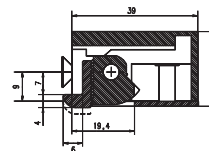
-15°C – +40°C



Without FaFix



With FaFix



131/331 – Series of special electric door
strikes for fire resistant, emergency exit
and security doors

Application

- Special door strikes for fire resistant, emergency exit and security doors.
- Secure unlocking even under preload (e.g. from door smoke seal).
- Standard: without FaFix = without adjustable keeper.
- Optional with FaFix = with adjustable keeper.
- RR version provides for latch bolt monitoring.
- Strike body is made from a steel casing.
- Fully reversible for both right-hand and left-hand DIN doors when turned by 180 degrees.
- **131 – Intended for use in fire doors.**
- **331 – Intended for use in emergency exits (keeper unlocking under preload up to 5,000 N).**

Strike Versions

- **Open when power is disconnected, blocked when power is applied** Series: 331UF Coils: E9, F9
- **Open when power is disconnected, blocked when power is applied + monitoring contact** Series: 331URF Coils: E9, F9
- **Open when power is applied, blocked when power is disconnected** Series: 131FF Coils: E3, F3
- **Open when power is applied, blocked when power is disconnected + monitoring contact** Series: 131RRFF Coils: E9, F9

Electrical Specifications

Note:

The 331 series strikes can be used in escape routes, where strike unlocking is guaranteed even under preload from emergency exit door.

Type	Description	Supply voltage (V)	Coil resistance (Ohm)	Current consumption AC (mA)	Current consumption DC (mA)
131FF-E3	Low consumption strike 12 V AC/DC	12 V AC/DC	42	160/5 sec	285
131FF-F3	Low consumption strike 24 V AC/DC	24 V AC/DC	175	70/5 sec	140
131RR FF-E3	Low consumption strike 12 V AC/DC + monitoring	12 V AC/DC	42	160/5 sec	285
131RR FF-F3	Low consumption strike 24 V AC/DC + monitoring	24 V AC/DC	175	70/5 sec	140
331UF-E9	Low consumption reversed strike 12 V DC with protection diode	12 V DC	37,5	–	320
331UF-F9	Low consumption reversed strike 24 V DC with protection diode	24 V DC	150	–	160
331URF-E9	Low consumption reversed strike 12 V DC + protection diode and monitoring	12 V DC	37,5	–	320
331URF-F9	Low consumption reversed strike 24 V DC + protection diode and monitoring	24 V DC	150	–	160

12 – Series of Special Waterproof Electric Door Strikes for Exterior Doors

TECHNICAL DETAILS

Break-in resistance:
3,000 N (306 kg)

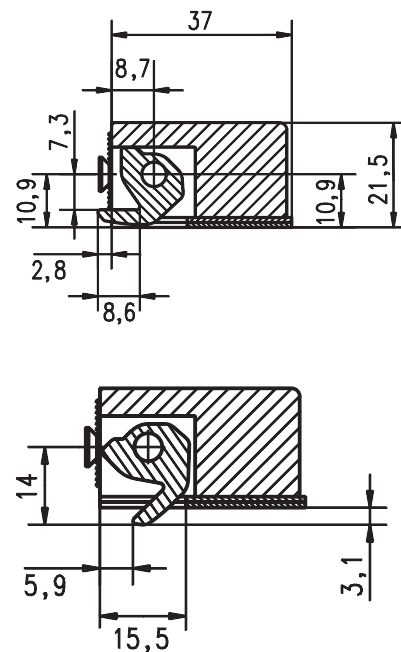
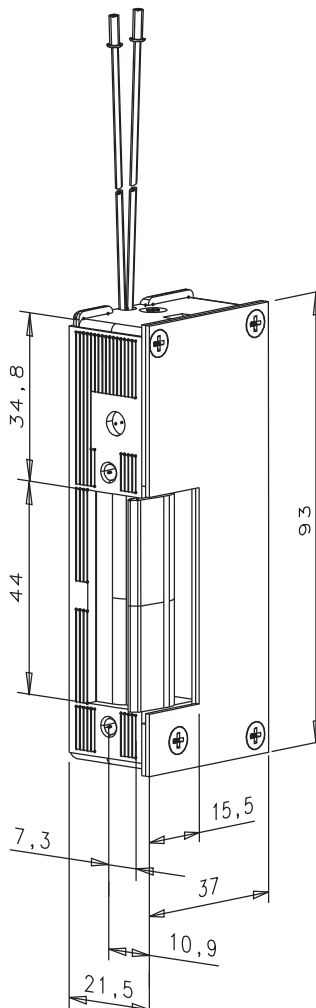
Body material:
zinc – die casting

Keeper material:
brass

Operating temperature range:
-20°C – +40°C



12 – Series of waterproof electric door strikes for exterior doors



Note:

The 12 series strikes can be used for surface mounting in exterior doors. In addition, a heating foil can be ordered. (Order code: 760-11-00, supply voltage: 6–24V)

Description and Application

- Special door strikes for exterior doors in waterproof design.
- FaFix (adjustable keeper) as a standard item.
- Cables for connection of a power supply (the strike has no terminal connections).
- Intended for surface mounting.
- Optional latch bolt monitoring.

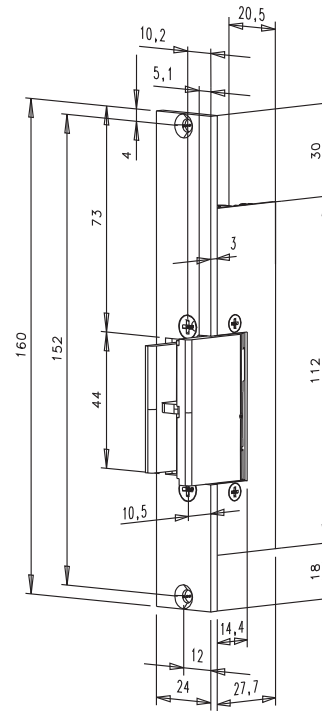
Strike Versions

- **Open when power is applied, blocked when power is disconnected + protection diode** Series: 1205iS Coils: E3, F3
- **Open when power is applied, blocked when power is disconnected + monitoring contact** Series: 1205RRiS Coils: E3, F3
- **Open when power is disconnected, blocked when power is applied (reversed strike) + protection diode** Series: 3205iS Coils: E9, F9
- **Open when power is disconnected, blocked when power is applied (reversed strike) + monitoring contact** Series: 3205RRiS Coils: E9, F9

Electrical Specifications

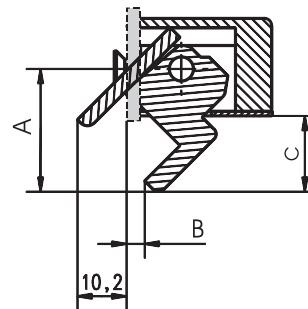
Type	Description	Supply voltage (V)	Coil resistance (Ohm)	Current consumption AC (mA)	Current consumption DC (mA)
1205F-E3	Low consumption strike 12V AC/DC with protection diode	12V AC/DC	60	130/5 sec	200
1205F-F3	Low consumption strike 24V AC/DC with protection diode	24V AC/DC	235	70/5 sec	105
1205RRF-E3	Low consumption strike 12V AC/DC with monitoring and protection diode	12V AC/DC	60	130/5 sec	200
1205RRF-F3	Low consumption strike 24V AC/DC with monitoring and protection diode	24V AC/DC	235	70/5 sec	105
3205F-E9	Low consumption reversed strike 12V DC with protection diode	12V DC	61	–	195
3205F-F9	Low consumption reversed strike 24V DC with protection diode	24V DC	200	–	120
32RRF-E9	Low consumption reversed strike 12V DC with monitoring	12V DC	61	–	195
32RRF-F9	Low consumption reversed strike 24V DC with monitoring	24V DC	200	–	120

914UZY is fitted with a 21 mm cylinder backset.



Technical drawing of a mechanical assembly with dimensions:

- Horizontal dimensions: 30,5 (total length), 3 (top offset), 10,5 (bottom offset), and B (total width).
- Vertical dimensions: A (total height), D (height of the lower part), 1,1 (height of the upper part), and 20,5 (height of the lower part).
- Other dimensions: C (width of the lower part).



- **Open when power is applied, blocked when power is disconnected with monitoring contact** Series: 914UR
- **Blocked when power is applied, open when power is disconnected (reversed strike)** Series: 934U
- **Blocked when power is applied, open when power is disconnected (reversed strike) with monitoring contact** Series: 934UR

Electrical Specifications

Type	Description	Supply voltage (V)	Coil resistance (Ohm)	Current consumption AC (mA)	Current consumption DC (mA)
914U-XX	Low consumption strike 12/24V AC/DC XX = 09/10/12 mm (glass thickness)	12/24V AC/DC	60/230	130/70/5 sec	200/105
914UR-XX	Low consumption strike 12/24V AC/DC XX = 09/10/12 mm (glass thickness) + monitoring	12/24V AC/DC	60/230	130/70/5 sec	200/105
934U-XX	Low consumption reversed strike 12/24V AC/DC XX = 09/10/12 mm (glass thickness)	12/24V AC/DC	62/230	–	195/105
934UR-XX	Low consumption reversed strike 12/24V AC/DC XX = 09/10/12 mm (glass thickness) + monitoring	12/24V AC/DC	62/230	–	195/105
914UZY-XX	Low consumption strike 12/24V AC/DC XX = 09/10/12 mm (glass thickness) + mechanical unlocking	12/24V AC/DC	60/230	130/70/5 sec	200/105

9314VGL – Series of Special Electric Door Strikes for Tempered Glass Doors without Frames

TECHNICAL DETAILS

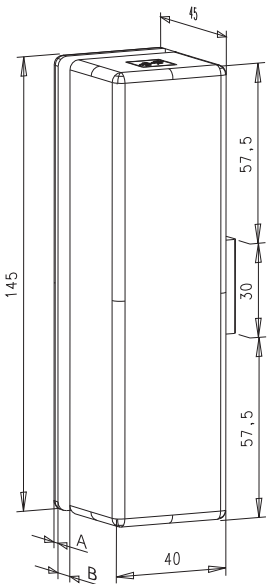
Break-in resistance:
6,500N (662 kg)

Body material:
zinc – die casting

Keeper material:
zinc – die casting

Operating temperature range:
-15°C – +40°C

NOTE! Door distance must be at least 6 mm!



9314 – Series of special electric door strikes for tempered glass doors without frames

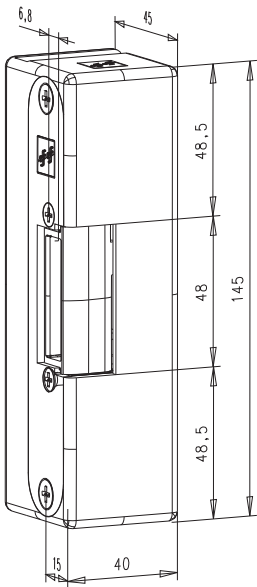
Description and Application

- Special door strikes for tempered glass doors without frames.
- Installation by glueing directly onto glass doors.
- Optional latch bolt monitoring.
- Keeper for glass thickness 9/10/12 mm.
- Fully reversible for both right-hand and left-hand doors when turned by 180 degrees.

Strike Versions

- **Open when power is applied, blocked when power is disconnected** Series: 9314 VGL Coils: E3, F3
- **Open when power is applied, blocked when power is disconnected with monitoring contact** Series: 9314 RR VGL Coils: E3, F3
- **Blocked when power is applied, open when power is disconnected (reversed strike)** Series: 9334 VGL Coils: E9, F9
- **Blocked when power is applied, open when power is disconnected (reversed strike)with monitoring contact** Series: 9334 RR VGL Coils: E9, F9

Note:
Adhesive glue for installation onto glass door is included in the delivery.



Glass thickness	9	10	12	15
	A 4,5	4	3	2
B	9,1	10,1	12,1	15,1

Electrical Specifications

Type	Description	Supply voltage (V)	Coil resistance (Ohm)	Current consumption AC (mA)	Current consumption DC (mA)
9314VGL-XX-E3	Low consumption strike 12 V AC/DC XX=09/10/12 mm (glass thickness)	12 V AC/DC	60	125/5sec	190
9314VGL-XX-F3	Low consumption strike 24 V AC/DC XX=09/10/12 mm (glass thickness)	24 V AC/DC	235	70/5sec	100
9314RRVGL-XX-E3	Low consumption strike 12 V AC/DC XX=09/10/12 mm (glass thickness) + monitoring	12 V AC/DC	60	125/5sec	190
9314RRVGL-XX-F3	Low consumption strike 24 V AC/DC XX=09/10/12 mm (glass thickness) + monitoring	24 V AC/DC	235	70/5sec	100
9334VGL-XX-E9	Low consumption reversed strike 12 V DC XX=09/10/12 mm (glass thickness)	12 V DC	62	–	195
9334VGL-XX-F9	Low consumption reversed strike 24 V DC XX=09/10/12 mm (glass thickness)	24 V DC	200	–	120
9334RRVGL-XX-E9	Low consumption reversed strike 12 V DC XX=09/10/12 mm (glass thickness) + monitoring	12 V DC	62	–	195
9334RRVGL-XX-F9	Low consumption reversed strike 24 V DC XX=09/10/12 mm (glass thickness) + monitoring	24 V DC	200	–	120

14.400 – Series of Special Electric Door Strikes for Doors in Escape Routes (with panic bars “89” and “90” series)

TECHNICAL DETAILS

Break-in resistance:
3,000 N (306 kg)

Body material:
zinc – die casting

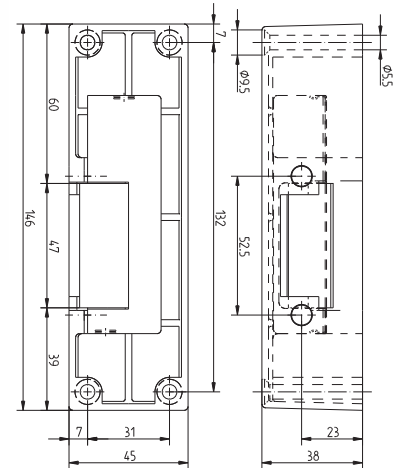
Keeper material:
brass

Operating temperature range:
-15°C – +40°C

Reversed strike version is available only for 12 V DC.



14.400 – Series of special electric door strikes for doors in escape route



Description and Application

- Special door strikes for doors in escape routes.
- Surface mounting in connection with panic bar.
- Optional latch bolt monitoring.
- Fully reversible for both right-hand and left-hand doors when turned by 180 degrees.
- The surface mounting bracket can be ordered for this strike.

Strike Versions

- **Open when power is applied, blocked when power is disconnected** Series: 14.400 Coils: E3, F3
- **Open when power is applied, blocked when power is disconnected with monitoring contact** Series: 14.460 Coils: E3, F3
- **Blocked when power is applied, open when power is disconnected (reversed strike)** Series: 34.400 Coils: E9
- **Blocked when power is applied, open when power is disconnected (reversed strike) with monitoring contact** Series: 34.400 Coils: E9

Electrical Specifications

Type	Description	Supply voltage (V)	Coil resistance (Ohm)	Current consumption AC (mA)	Current consumption DC (mA)
14.400-E3	Strike, outdoor mounting in connection with panic bar 12 V AC/DC	12 V AC/DC	60	125/5 sec	200
14.400-F3	Strike, outdoor mounting in connection with panic bar 24 V AC/DC	24 V AC/DC	235	70/5 sec	102
14.460-E3	Strike, outdoor mounting in connection with panic bar 12 V AC/DC + monitoring	12 V AC/DC	60	125/5 sec	200
14.460-F3	Strike, outdoor mounting in connection with panic bar 24 V AC/DC + monitoring	24 V AC/DC	235	70/5 sec	102
34.400-E9	Reversed strike, outdoor mounting in connection with panic bar 12 V DC	12 V DC	62	–	200
34.460-E9	Reversed strike, outdoor mounting in connection with panic bar 12 V DC + monitoring	12 V DC	62	–	200
20105-01	Outdoor mounting bracket, black				

Note:
Outdoor mounting bracket has an order code 20105-01.



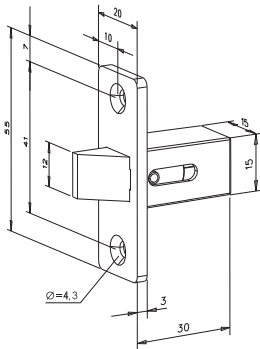
804-00



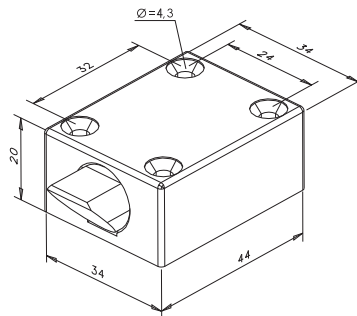
805-00



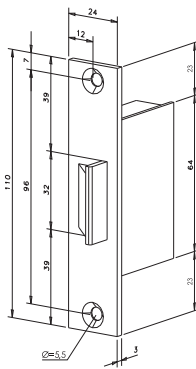
807-10-00



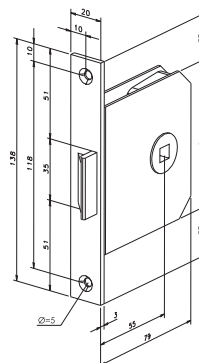
802-00



804-00



807-10-00

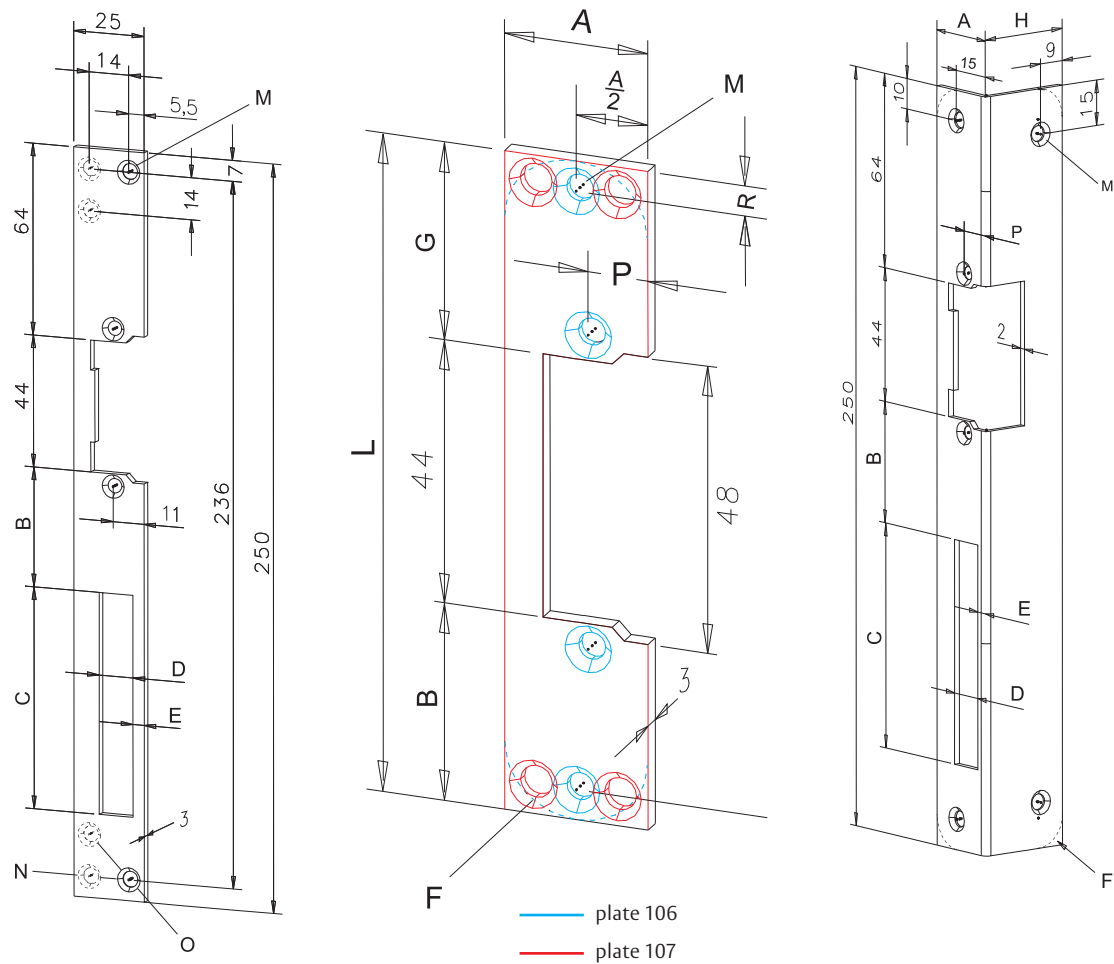


805-00

Type	Description
802-00	Spring latch bolt, morticed
804-00	Spring latch bolt, screw-on mounted
805-00	Spring latch bolt with spindle for handle
807-10-00	Spring latch bolt for security strikes

Striking Plates for effeff Strikes

For all strikes except 131/331:



Striking plate 021 dimensions
order no. 021xx-01 (universal)

B	C	D	E
40 mm	74 mm	12 mm	4 mm

Striking plates 106/107 dimensions
order no. 106xx-01/107xx-01 (universal)

A	B	F	G
24 mm	33 mm	NE	33 mm
L	M	P	R
110 mm	4.5x7.8 mm	10 mm	5 mm

Striking plate 324 dimensions
order no. 324xx-04/05 (left/right)

A	B	C
25 mm	40 mm	74 mm
D	E	F
12 mm	40 mm	10 mm
H	M	P
32 mm	5.3x8 mm	11 mm

Finish:

xx	
04	white color
02	gray color
01	gold color
35	stainless steel
31	polished brass
40	zinc plated, ground

Finish:

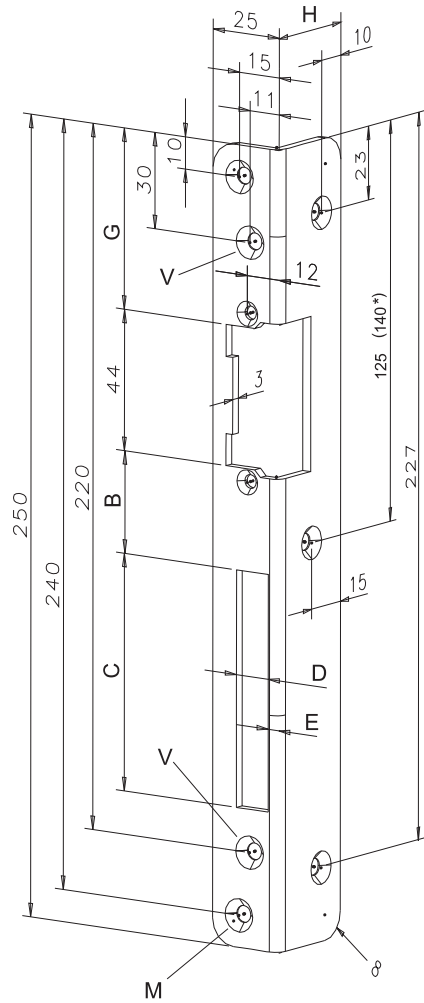
xx	
02	gray color
35	stainless steel
40	zinc plated, ground

Finish:

xx	
04	white color
05	black color
01	gold color
31	polished brass
35	stainless steel
41	yellow chrome plated
40	zinc plated, ground

Striking Plates for effeff Strikes

**For all strikes
except 131/331:**



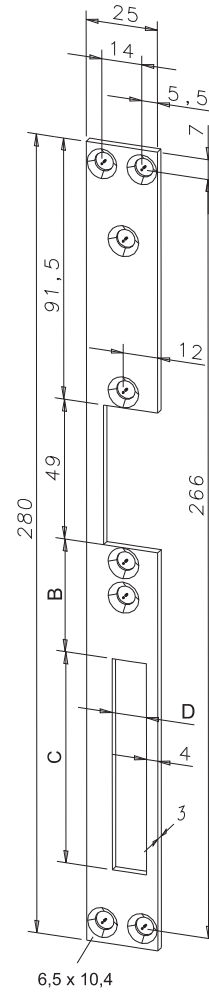
Striking plate 277 dimensions
order no. 277xx-04/05 (left/right)

B	C	D	E
32 mm	72 mm	9.5 mm	5 mm
G	H	M	V
56.5 mm	32 m	5.5x10.5mm	NE

Finish:

xx	
35	stainless steel

For 131/331 strikes:

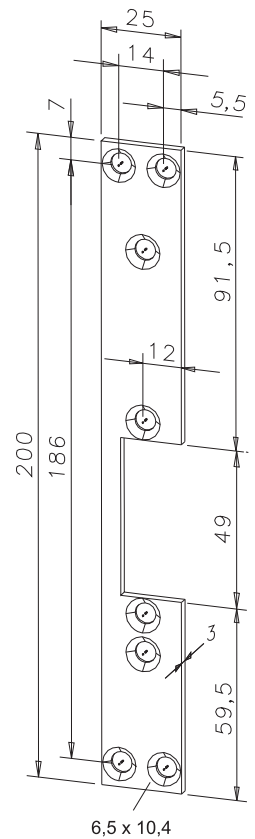


Striking plate 028 dimensions
order no. 028xx-04/05 (left/right)

B	C	D
39.5mm	74mm	12mm

Finish:

xx	
35	S/S
40	zinc plated, ground



Striking plate 116
order no. 116xx-04/05
(left/right)

Finish:

xx	
35	S/S
40	zinc plated, ground