

Assa Modular lockcases



An ASSA ABLOY Group company

ASSA[®]

Assa - The security company

Assa AB manufactures and develops locks and security systems for the world's public building market. New regulations and local standards require us to continuously adapt to a changing world.

Assa products are recognised by architects and end users around the world for quality, security, design and awareness of the environment.

Quality

Assa products are supplied in accordance with well-documented quality procedures.

Assa is certified according to ISO 9001.

Security and Design

When your investment in technology, functionality and performance reflects the value of the protected property, you have the right security.

Environment

Our environmental commitment is based on a view where considerations are made around technical, economical and ecological effects.

The ASSA logo is displayed in a bold, blue, sans-serif font. The letters 'A', 'S', and 'A' are significantly larger than the 'S' in the middle. A registered trademark symbol (®) is positioned to the upper right of the final 'A'.

ASSA®

Contents

Information

Assa Classic	6
Assa Heavy Duty	6
Assa lockcase with microswitches	7
Assa Modular locks	4
Assa Multi-point locking	8
Assa Split Spindle	7

Descriptions

Symbols	9
Terminology	10
Lockcase parts	11

Lock cases

Assa 504, 506 and 509	28
Assa 560, 562 and 1560	22
Assa 565	16
Assa 566	30
Assa 587	12
Assa 1498	31
Assa 1520	26
Assa 2000	19
Assa 2587	14
Assa 2588	20
Assa 5584, 5585 and 6585	23
Assa 7787	13
Assa 8560 and 8564	24
Assa 8561 and 8562	25
Assa 8765	18
Assa 9787	15
Assa 9788	21

Miscellaneous

Accessories	33
Assa 1887 security strikes	34
Assa 2800 standard strikes	35
Dimensions	37
Door preparation	38
Finishes	32
Lockcase reference chart	39
Microswitch description	36

Assa Modular locks

With the Modular concept you can really say it reflects what Assa stands for: Quality, Safety, Security and Design. The engineers at Assa wanted to construct a range of lockcases, which would suit all the needs an end user could ask for. It should be flexible, the needs very often change over the years, companies expand and reorganise, new tenants have different needs.

Door manufacturers require simplified mortising processes, to prevent costly changes in their production and long lead times. The Assa Modular Concept has been developed together with door manufacturers to simplify their process.

Security is the principle reason for locking a door in the first place. The Modular concept has been developed together with insurance companies and the police to fulfil their requirements. They also comply with the toughest standards in the world.

Safety and convenience, the human being is always in focus for Assa. Several locks in the range are suitable for escape doors and fire doors.



Features for the modular lock

- Most of the lockcases are available with 50 and 70 mm backset.
- Cylinders and accessories have bolt through fixing for added strength and maximum resistance to attack.
- A wide range of cylinders and accessories allows for changes of function and door thickness on site.
- The largest number of functions available in the world using the same standard case size.
- Superior strength of faceplate construction.
- The faceplate is easily interchangeable if another finish is required, or if change of handing needed.
- All parts are made of steel and the lockcases are fully covered on all sides to prevent tampering.
- Hardened steel deadbolts and steel latchbolts with a special hardwearing low-friction coating. With smooth closing these locks are suitable for use in fire doors. Modular locks have been used in fire doors rated to 4 hours.
- Almost all models are available with internal micro switch to prevent tampering. This gives possibilities to monitor the lock and link it to an access control system.
- Fulfil the requirements according to all the major standards in the world.



Lockcase Assa 565
see page 18.

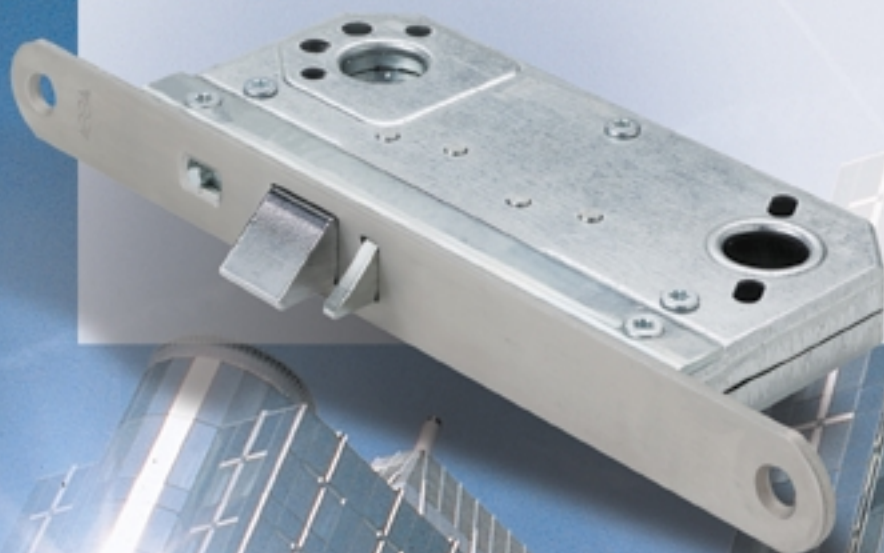
Assa Classic

Application

The modular Classic is a wide assortment of robust modular lockcases for use in the majority of applications, from government buildings and banks to community housing and industrial complexes.

Functions

In the Classic assortment there is a total number of 20 different lock functions available to ensure easy interchangeability as all functions are fitted in the same mortice.



Lockcase Assa 5584,
see page 23.

Assa Heavy Duty

Application

The modular Heavy Duty is a complete assortment of robust modular lockcases for use in areas of high frequency and heavy use and also where the surrounding environment demands a high corrosion resistance such as schools, public baths, chemical industries and food processing industry.

Functions

Almost all functions in the Classic assortment are also available in the Heavy Duty version. The modular Heavy Duty are as standard equipped with stainless steel faceplate. Latches and bolt are coated with a special hardwearing and low friction finish to ensure performance. Locks with lever function spring also have an extra strong lever handle spring.



Lockcase Assa 565
see page 16.

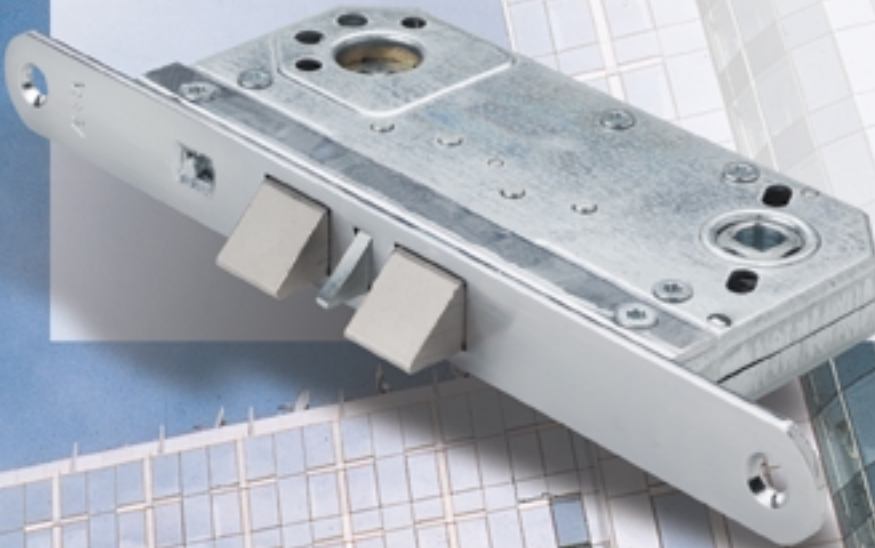
Assa Split Spindle

Application

Lockcases with Split Spindle are a preferred solution in doors where there are demands for convenience and quick exit.

Functions

The Spit Spindle locks are constructed to give one function from the outside and a different from the inside. From the inside there is always an exit possibility by using the lever handle function even when the latch or deadbolt are in locked position.



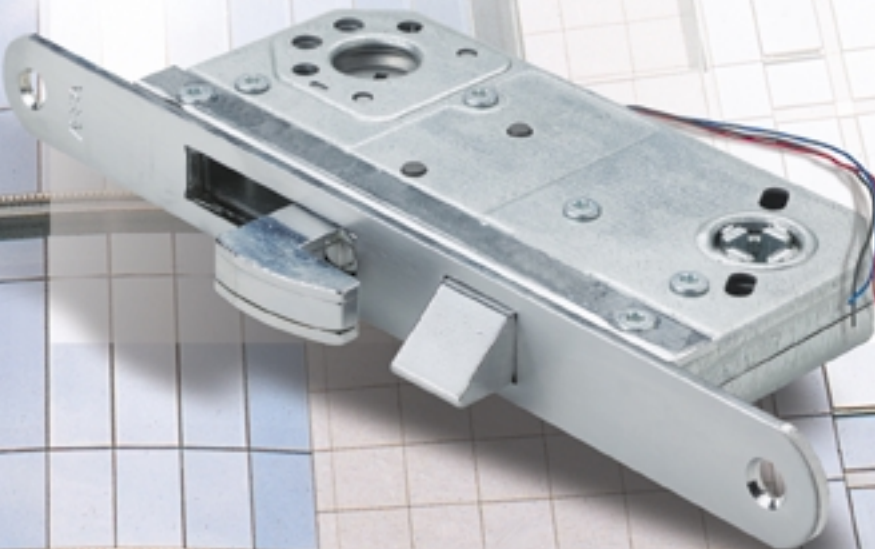
Lockcase Assa 504,
see page 28.

Assa lockcase with microswitches

In the Modular assortment most of the locks can be equipped with microswitches. It is possible to obtain an indication from the latch bolt, guard bolt and deadbolt. Microswitches in the lockcase thereby offer the benefit of higher security.

Since the Modular lockcases are fully covered on all sides it is very difficult to tamper with the microswitches.

Already at the specifying stage it is important to determine the necessary functions of the micro-switch to match the end users needs.



Lockcase Assa 7787
see page 13.


Assa Multi-point locking

Application

Assa Multi-point locks are generally installed as perimeter protection for private housing. The two hook bolts together with a sashlock provide a connecting bond between the door and the frame, which provides a very strong solution even for wooden doors.

Function

Assa Multi-point locks have three locking points where the top and bottom hook bolts are activated by lifting the lever handle upwards. The centre dead bolt is operated by the cylinder and at the same time blocks the handle function in the locked position. Several lock versions are available which at the same time can be equipped with microswitches.



Lockcase Assa 2000MP
multi-point.

Symbols



The lockcase complies with the Swedish standard SS 3522 Grade 2.



The lockcase complies with the Swedish standard SS 3522 Grade 3.



Complies with the requirements of BS 3621 (1980) if supplied with appropriate cylinder and accessory type.



Available with 50 mm backset.



Available with 70 mm backset.



Lockcase can be used with Assa round cylinder.



Lockcase can be used with Assa oval cylinder.



Lockcase can be equipped with internal microswitch.



Lockcase can be combined with electric strike.



Assa Classic



Assa Heavy Duty



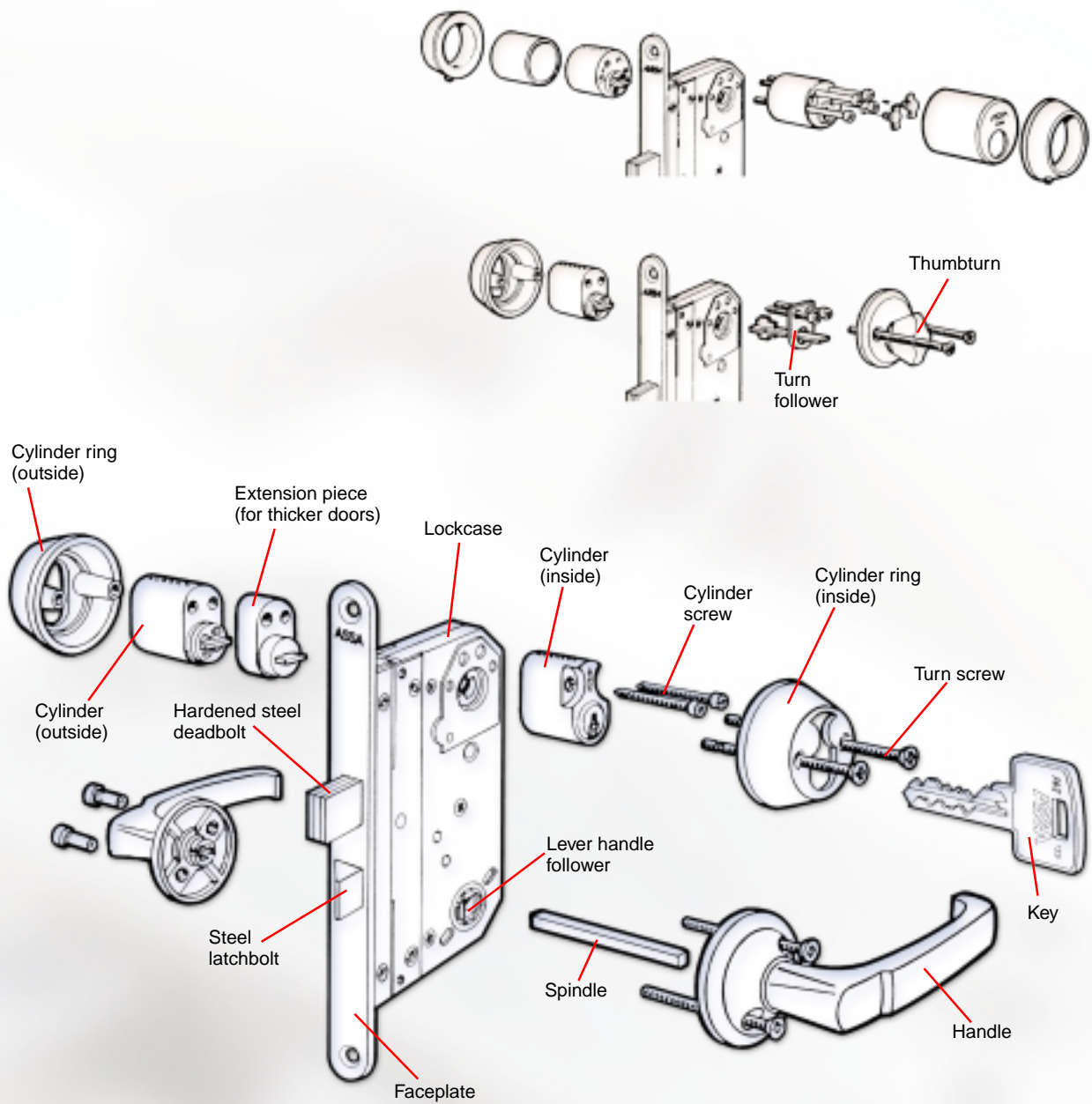
Lockcase suitable for emergency doors*.



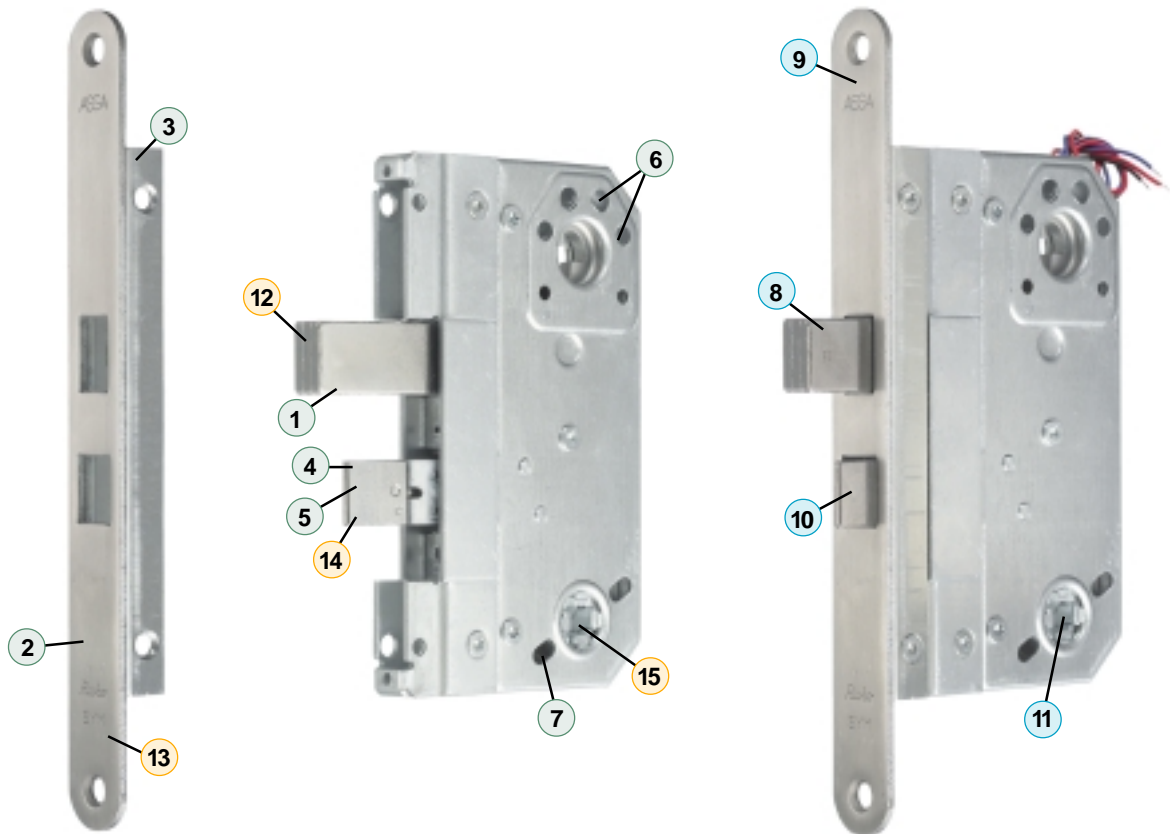
Lockcase suitable for fire doors*.

**Check local regulations.*

Terminology



Lockcase parts



Standard

- ① 21 mm deadbolt.
- ② Removable faceplate.
- ③ Reinforced faceplate.
- ④ 14 mm steel latchbolt.
- ⑤ Reversible latchbolt.
- ⑥ Through-going fixing of cylinder and cylinder accessories.
- ⑦ Through-going fixing of handle.

Classic

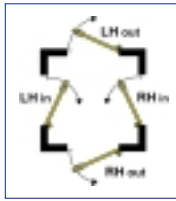
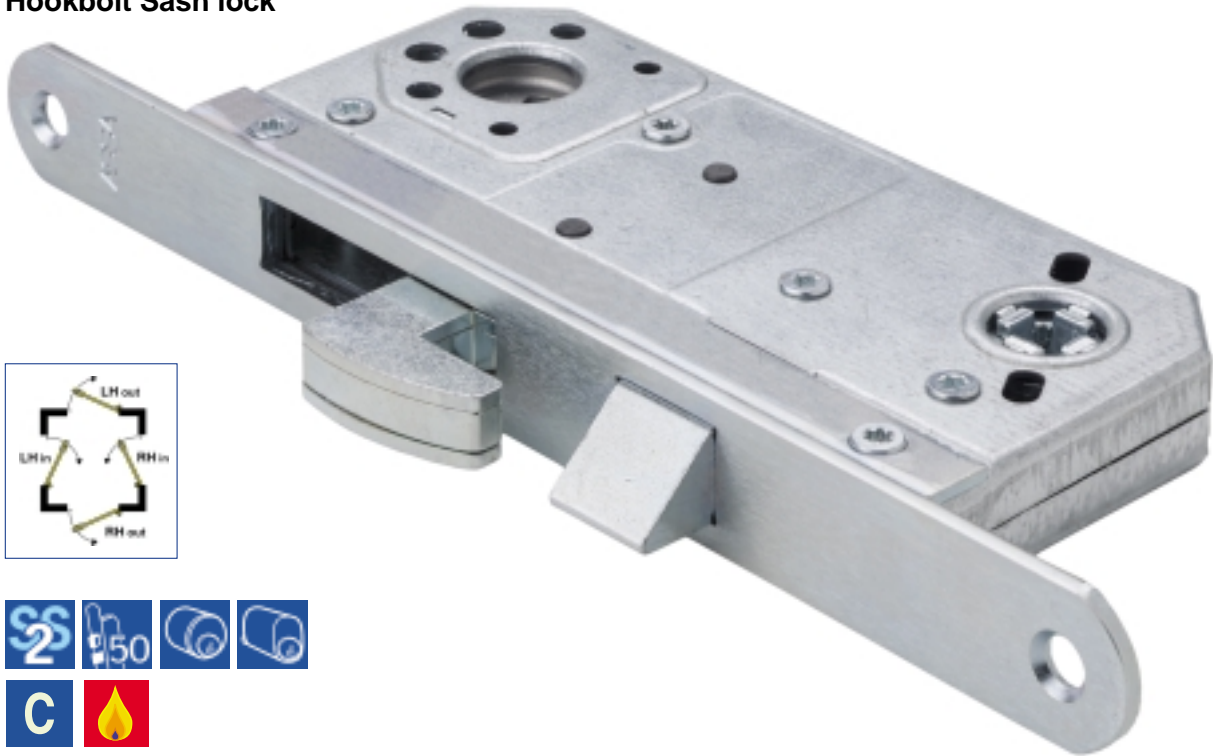
- ⑫ Zinc plated deadbolt either case hardened or mild steel depending on model.
- ⑬ Steel faceplate.
- ⑭ Zinc plated latchbolt.
- ⑮ Standard handle follower spring.

Heavy Duty

- ⑧ Chrome plated deadbolt, hardened steel.
- ⑨ Stainless steel faceplate
- ⑩ Chrome plated latchbolt
- ⑪ Strong handle follower spring

Assa 587

Hookbolt Sash lock



Application

Internal security as the hookbolt provides maximum resistance to attack. Suitable for internal applications where valuable items are stored. Computer studios, archives and store rooms. Assa 587 can also be used as a passage latch with the hookbolt for night locking.

Features

- Steel deadbolt projects 22 mm thrown by 85° turn of key or thumbturn.
- Key can be removed in locked or unlocked position.
- Latchbolt reversible without opening lockcase.
- Available with 50 mm backset only.
- Available with double cylinders or single cylinder only or single cylinder and thumbturn.
- Cylinder and accessories bolt through lockcase for added strength.

Striking plate



Please note that striking plates has to be ordered separately.

See page 34 for further information.

Function

Single cylinder and thumbturn		
Exterior		Interior
Key operates hookbolt. Lever handle retracts latchbolt.		Thumbturn operates hookbolt. Lever handle retracts latchbolt.

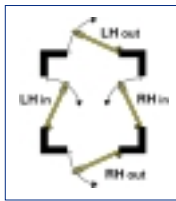
Cylinder accessories: 256 - Set of outside cylinder ring, thumbturn, cylinder screws and thumbturn screws.

Double cylinders		
Exterior		Interior
Key operates hookbolt. Lever handle retracts latchbolt.		Key operates Hookbolt. Lever handle retracts latchbolt.

Cylinder accessories: 18256 - Set of outside cylinder ring, inside cylinder ring, cylinder screws and cylinder ring screws.

Assa 7787

High security hookbolt sash lock



Application

Perimeter protection where high security is required as the hookbolt provides maximum resistance to attack. Locks for shop entrance doors, private houses and industrial premises.

Suitable applications are front and back doors to smaller offices, shops and light industries. The Heavy Duty range is also suitable in hospitals and public buildings.

Features

- Hardened steel deadbolt projects 22 mm thrown by 360° turn of key or thumbturn.
- Key can be removed in locked or unlocked position.
- Latchbolt reversible without opening lockcase.
- Available with 50 mm backset only.
- Available with double cylinders or single cylinder only or with single cylinder and thumbturn.
- Cylinder and accessories bolt through lockcase for added strength.

Striking plate

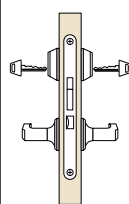


Please note that striking plates has to be ordered separately.

See page 34 for further information.

1887

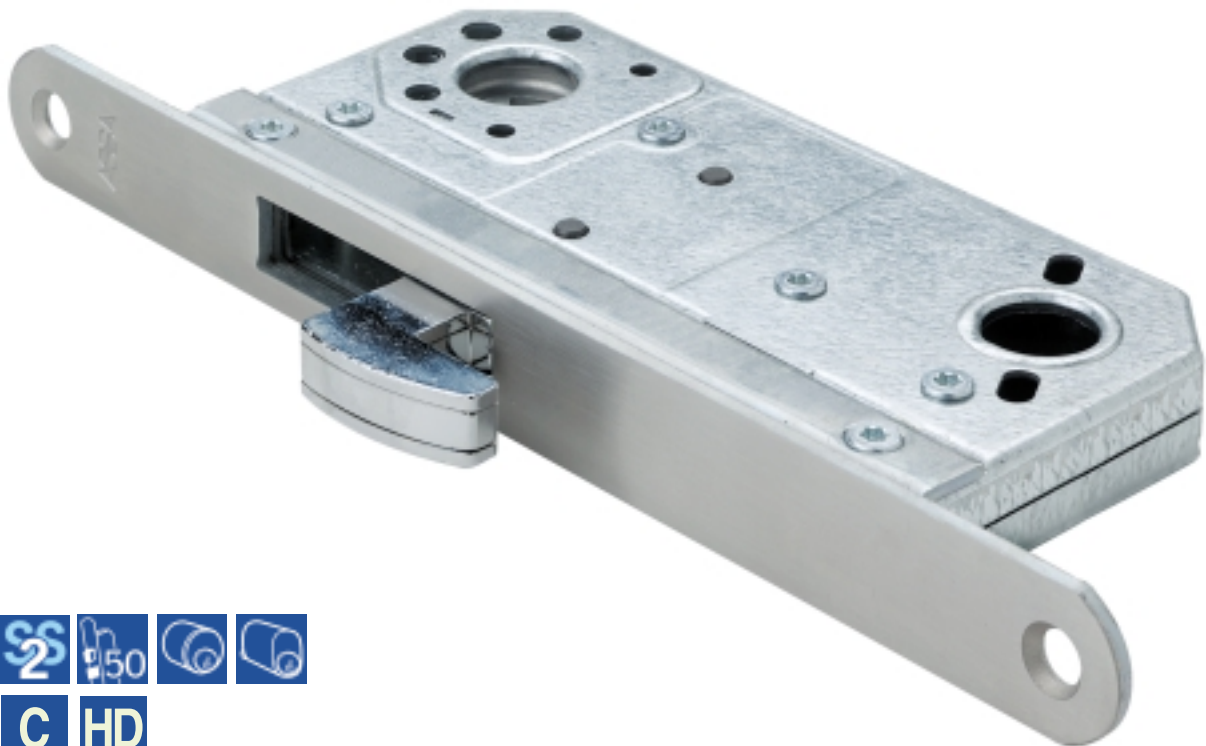
Function

Double cylinders		
Exterior		Interior
Key operates hookbolt. Lever handle retracts latchbolt.		Key operates hookbolt. Lever handle retracts latchbolt.

Cylinder accessories: 18256 - Set of outside cylinder ring, inside cylinder ring, cylinder screws and cylinder ring screws.

Assa 2587

Hookbolt lock



C HD

Application

Internal nightlock when security is required as the hookbolt provides maximum resistance to attack. Suitable applications are sliding doors, double doors and gates. Also as a secondary lock on any door.

Features

- Hardened chromium plated steel hookbolt projects 22 mm through by 90° turn of key or thumbturn.
- Available with 50 mm backset only.
- Available with single cylinder and thumbturn or with double cylinders or single cylinder only.
- Cylinder and accessories bolt through lockcase for added strength.

Striking plate

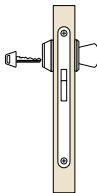


Please note that striking plates has to be ordered separately.

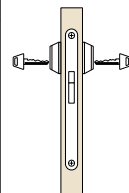
See page 34 for further information.

1887

Function

Single cylinder and thumbturn		
Exterior		Interior
Key operates hookbolt.		Thumbturn operates hookbolt.

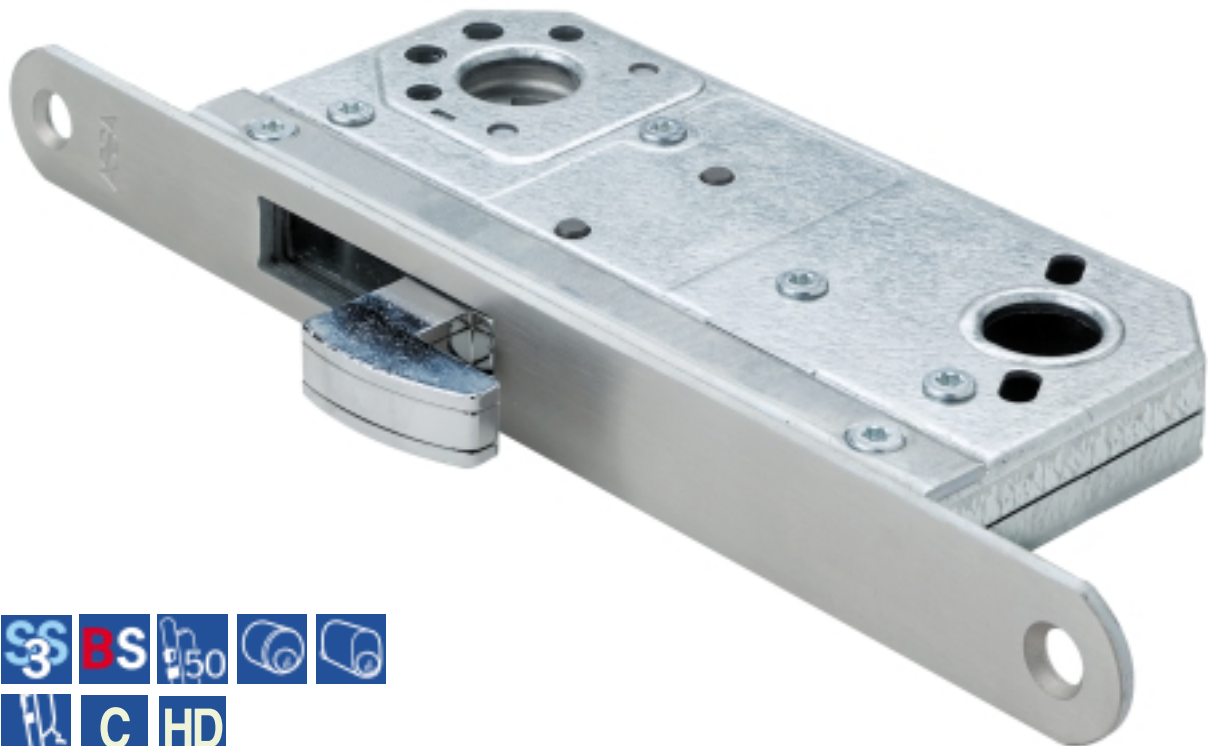
Cylinder accessories: 256 - Set of outside cylinder ring, thumbturn, cylinder screws and thumbturn screws.

Double cylinders		
Exterior		Interior
Key operates hookbolt.		Key operates hookbolt.

Cylinder accessories: 18256 - Set of outside cylinder ring, inside cylinder ring, cylinder screws and cylinder ring screws.

Assa 9787

Hookbolt lock



Application

Perimeter protection nightlock when high security is required as the hookbolt provides maximum resistance to attack.

Suitable applications are sliding doors, double doors and gates. Also as a secondary lock on any door.

Features

- Hardened chromium plated steel hookbolt projects 22 mm through by 360° turn of key or thumbturn.
- Key can be removed in locked or unlocked position.
- Available with 50 mm backset only.
- Available with single cylinder and thumbturn or with double cylinders or single cylinder only.
- Cylinder and accessories bolt through lockcase for added strength.

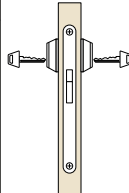
Striking plate



Please note that striking plates has to be ordered separately.

See page 34 for further information.

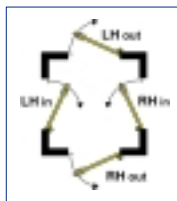
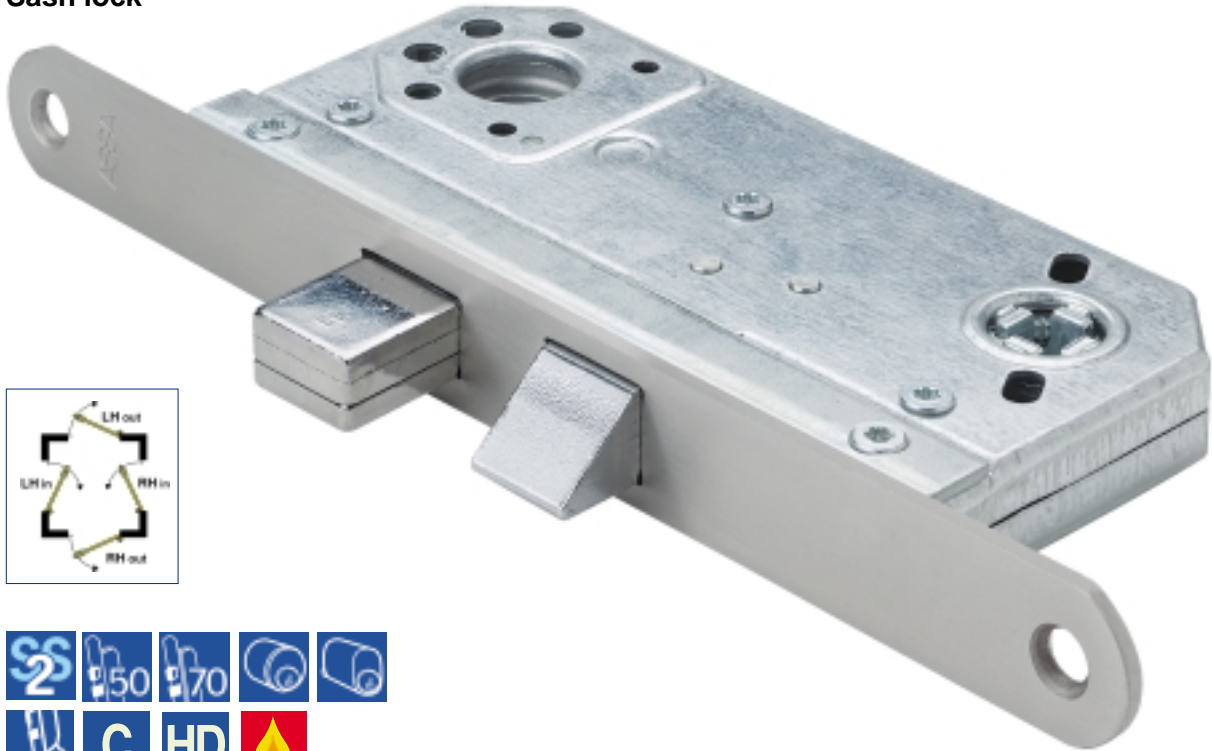
Function

Double cylinders		
Exterior		Interior
Key operates hookbolt.		Key operates hookbolt.

Cylinder accessories: 18256 - Set of outside cylinder ring, inside cylinder ring, cylinder screws and cylinder ring screws.

Assa 565

Sash lock



Application

Standard locking, the 565 is suitable for most doors in any kind of building.

Suitable applications are entrance doors, patio, privacy and toilets for the handicapped.

Features

- Hardened steel deadbolt thrown 21 mm by 90° turn of key or thumbturn.
- Key can be removed in locked or unlocked position.
- Latchbolt reversible without opening lockcase.
- Extra sturdy construction for heavy duty use.
- Bolt and latch are chromium plated.
- Available with either 50 mm or 70 mm backset.
- Available with double cylinders or single cylinder only or with single cylinder and thumbturn.
- Cylinder and accessories bolt through lockcase for added strength.

Striking plates



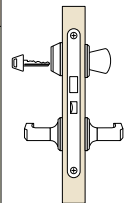
Please note that striking plates has to be ordered separately.

See page 34-35 for further information.



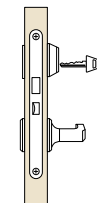
Function

Single cylinder and thumbturn (F02)

Exterior		Interior
Key operates deadbolt and retracts latchbolt. Lever handle retracts latchbolt.		Thumbturn operates deadbolt and latchbolt. Lever handle retracts latchbolt.

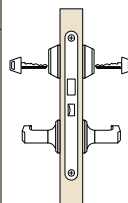
Cylinder accessories: 256 - Set of outside cylinder ring, thumbturn, cylinder screws and thumbturn screws.

Patio Lock

Exterior		Interior
No external function.		Key operates deadbolt and retracts latchbolt. Lever handle retracts latchbolt.

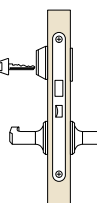
Cylinder accessories: 2256 - Set of outside blind rose, inside cylinder ring, cylinder ring screws and cylinder screws.

Double cylinders (F14)

Exterior		Interior
Key operates deadbolt. Lever handle retracts latchbolt.		Key operates deadbolt. Lever handle retracts latchbolt.

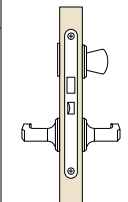
Cylinder accessories: 18256 - Set of outside cylinder ring, inside cylinder ring, cylinder screws and cylinder ring screws.

Closet Lock

Exterior		Interior
Key operates deadbolt and retracts latchbolt. Lever handle retracts latchbolt.		Lever handle retracts latchbolt.

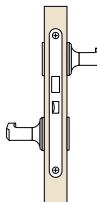
Cylinder accessories: 2356 - Set of outside cylinder ring, inside blindrose, cylinder screws and cylinder ring screws.

Privacy Lock

Exterior		Interior
Outside indicator rose with emergency opening slot. Lever handle retracts latchbolt.		Thumbturn operates deadbolt and retracts latchbolt. Lever handle retracts latchbolt.

Cylinder accessories: 265 - Set of outside indicator rose with emergency opening, thumbturn and screws.

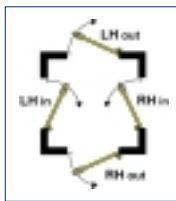
Handicap Toilet Lock

Exterior		Interior
Lever handle retracts latchbolt, outside indicator with emergency slot.		Lever handle operates deadbolt, outside indicator and retracts latchbolt. Locking deadbolt by flipping up the handle 45°.

Cylinder accessories: 9565T - Set of outside indicator, outside lever handle and screws, inside blind rose, inside lever handle, screws and spindle with follower.

Assa 8765

High security sash lock



Application

Perimeter protection where high security is required as the hardened deadbolt provides high resistance to attack. Locks for shops to entrance doors to private houses, industrial premises. Suitable applications are front and back doors to smaller offices, shops and light industries. The Heavy Duty range is also suitable in hospitals and public buildings.

Features

- Special high security lockcase.
- Hardened steel deadbolt thrown 21 mm by single 360° turn of key or thumbturn.
- Key can be removed in locked or unlocked position.
- Latchbolt reversible without opening lockcase.
- Available with 50 mm or 70 mm backset.
- Available with double cylinders or single cylinder only or with single cylinder and thumbturn.
- Cylinder and accessories bolt through lockcase for added strength.
- Extra sturdy construction for heavy duty use.
- Latch and deadbolt chromium plated.

Striking plate



1887

Please note that striking plates has to be ordered separately.

See page 34 for further information.

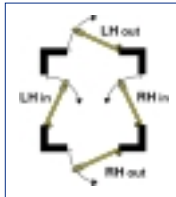
Function

Double cylinders (F14)		
Exterior		Interior
Key operates deadbolt. Lever handle retracts latchbolt.		Key operates deadbolt. Lever handle retracts latchbolt.

Cylinder accessories: 18256 - Set of outside cylinder ring, inside cylinder ring, cylinder screws and cylinder ring screws.

Assa 2000

Home convenient / away secure sash lock



Application

Locks for private houses and apartments where there is a need for the convenience of a thumbturn when the building is occupied but with the possibility to prevent unauthorised use of the thumbturn when the building is left unattended.

Features

- Special high security lockcase.
- Hardened steel deadbolt thrown 21 mm by single 360° turn of key or by 95° turn of thumbturn.
- Key can be removed in locked or unlocked position.
- Latchbolt reversible without opening lockcase.
- Available with 50 mm backset only.
- Available with double cylinders and thumbturn on inside.
- Cylinder and accessories bolt through lockcase for added strength.
- Extra sturdy construction for Heavy Duty use.
- Latch and deadbolt chromium plated.

Striking plate



Please note that striking plates has to be ordered separately.

See page 34 for further information.

1887

Function

2000 set	
Exterior	Interior
<p>Key operates deadbolt. Lever handle retracts latchbolt.</p>	<p>In away secure mode Key operates deadbolt. Thumbturn cannot be used. Lever handle retracts latchbolt.</p> <p>In home convenient mode Thumbturn or key operates deadbolt. Lever handle retracts latchbolt.</p>



At home -
Lock and unlock using the thumbturn.



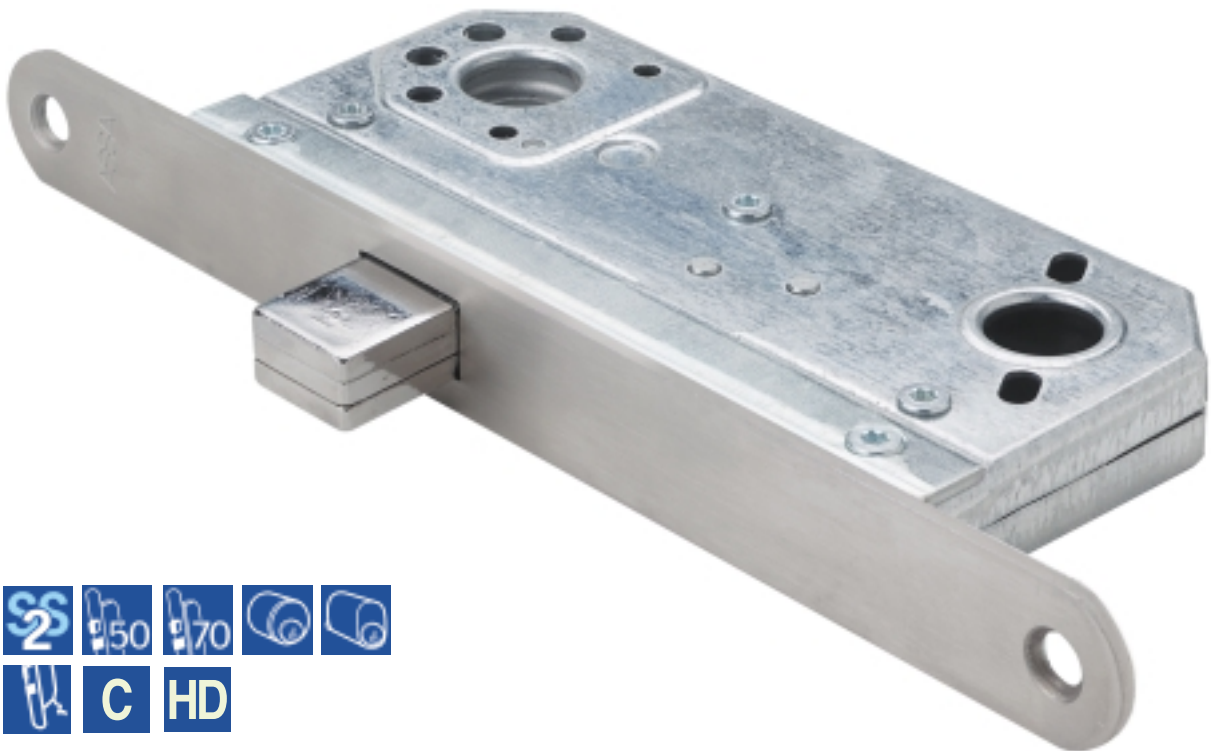
Leaving home -
Slide the "ingenious button" down and the thumbturn is disengaged.



Returning -
Open with the key, the thumbturn is then re-engaged.

Assa 2588

Deadlock



Application

Internal nightlock when security is required as the hardened deadbolt provides high resistance to attack. Suitable applications are entrance doors, corridor and other swingdoors with door pull and push plates. Also as a secondary indoor lock.

Features

- Hardened chromium plated steel deadbolt thrown 21 mm by 90° turn of key or thumbturn.
- Key can be removed in locked or unlocked position.
- Available with either 50 mm or 70 mm backset.
- Available with single cylinder and thumbturn alternatively with double cylinders or single cylinder only.
- Cylinder and accessories bolt through lockcase for added strength.

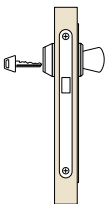
Striking plates



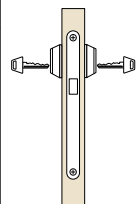
Please note that striking plates has to be ordered separately.

See page 34-35 for further information.

Function

Single cylinder and thumbturn (F17)		
Exterior		Interior
Key operates deadbolt and retracts latchbolt.		Thumbturn operates deadbolt and latchbolt.

Cylinder accessories: 256 - Set of outside cylinder ring, thumbturn, cylinder screws and thumbturn screws.

Double cylinders (F16)		
Exterior		Interior
Key operates deadbolt.		Key operates deadbolt.

Cylinder accessories: 18256 - Set of outside cylinder ring, inside cylinder ring, cylinder screws and cylinder ring screws.

Assa 9788

High security deadlock



Application

Perimeter protection nightlock when high security is required as the hardened deadbolt provides high resistance to attack.

Suitable applications are entrance doors, corridor doors. Also as a secondary lock on any door for extra perimeter protection.

Features

- Hardened chromium plated steel deadbolt thrown 21 mm by single 360° turn of key or thumbturn.
- Key can be removed in locked or unlocked position.
- Available with 50 mm or 70 mm backset.
- Available with double cylinders or single cylinder only or with single cylinder and thumbturn.
- Cylinder and accessories bolt through lockcase for added strength.

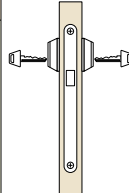
Striking plates



Please note that striking plates has to be ordered separately.

See page 34-35 for further information.

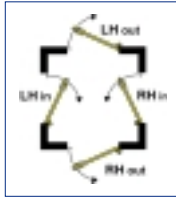
Function

Double cylinders (F16)		
Exterior		Interior
Key operates deadbolt.		Key operates deadbolt.

Cylinder accessories: 18256 - Set of outside cylinder ring, inside cylinder ring, cylinder screws and cylinder ring screws.

Assa 560, 562 and 1560

Nightlatches with additional latch



Application

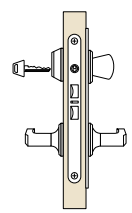
Internal double night latch with automatic dead locking. Suitable for any kind of location where automatic deadlocking is required such as electrical rooms. Often combined with 9787 or 9788 in entrances.

Features

- Upper bolt deadlocks automatically when door is closed.
- Snib for locking the upper latchbolt into lockcase.
- Lower latchbolt operated by lever handle.
- Available with either 50 mm or 70 mm backset.
- Available with single cylinder and thumbturn or with double cylinders or single cylinder only.
- Cylinder and accessories bolt through lockcase for added strength.
- Key can only be removed in locked position.
- Latchbolts reversible without opening lockcase.

Function

Single cylinder and thumbturn

Exterior		Interior
Upper latchbolt automatically deadlocked. Key retracts both latchbolts. Lever handle retracts lower latchbolt.		Turn retracts both latchbolts. Lever handle retracts lower latchbolt. Upper latchbolt held back by snib in faceplate.

Cylinder accessories: 256 - Set of outside cylinder ring, thumbturn, cylinder screws and thumbturn screws.

Assa 562

Deadlocking with key lock-back

Upper latchbolt deadlocks automatically when door is closed.

Key locking of upper latchbolt into lockcase.

Lower bolt operated by lever handle.



Assa 1560

Deadlocking without lock-back

Upper latchbolt deadlocks automatically when door is closed. No locking of upper latchbolt into lockcase. Lower latch operated by lever handle.



Striking plate



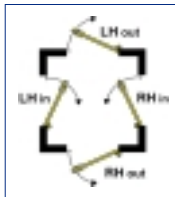
Please note that striking plates has to be ordered separately.

See page 35 for further information.

2800

Assa 5584, 5585 and 6585

Nightlatches



Application

Locks for entrance doors where automatic locking is required when the door is closed, especially suitable together with electric strike.

Often combined with 9787 or 9788.

Features

- Latchbolt deadlocks automatically when door is closed.
- Snib for locking bolt into lockcase.
- Available with either 50 mm or 70 mm backset.
- Chromium plated latchbolt reversible without opening lockcase.
- Key can only be removed in locked position.
- Available with double cylinders or single cylinder only or with single cylinder and thumbturn.
- Cylinder and accessories bolt through lockcase for added strength.

Function

Single cylinder and thumbturn		
Exterior		Interior
Latchbolt automatically deadlocked. Key retracts latchbolt.		Turn retracts latchbolt. Latchbolt held back by snib in faceplate.

Cylinder accessories: 256 - Set of outside cylinder ring, thumbturn, cylinder screws and thumbturn screws.

Assa 5585

Deadlocking with key lock-back

Latchbolt deadlocks automatically when door is closed. Key for locking latchbolt into lockcase.



Assa 6585

Deadlocking without snib lock-back

Latchbolt deadlocks automatically when door is closed. No locking of latchbolt into lockcase.



Striking plate



Please note that striking plates has to be ordered separately.

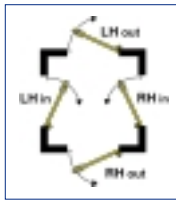
See page 35 for further information.

2800

Assa 8560 and 8564

For use with thumbturn

Emergency nightlatches



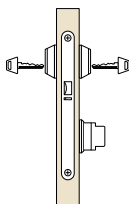
Application

Locks for exit doors offering an automatic deadlocking and at the same time unrestricted exit in an emergency. Suitable for emergency escape doors in hotels, factories, hospitals, schools, offices etc.

Features

- Latchbolt deadlocks automatically when door is closed. Emergency exit "break dome" thumbturn for non key-holders.
- Light spring for use without lever handles.
- Available with either 50 mm or 70 mm backset.
- Can be included as part of a total security system including mechanical and electrical devices.
- Microswitch can be fitted in the lock to enable an alarm or other signal to be activated by use of either the escape function or key and escape function.
- Cylinder and accessories bolt through lockcase for added strength.

Function

Double cylinders + Emergency accessory		
Exterior		Interior
Key operation.		Key operation. Emergency exit breakdome thumbturn for non key-holders.

Cylinder accessories: 18256 - Set of outside cylinder ring, inside cylinder ring, cylinder screws and cylinder ring screws.
Emergency accessory: Thumbturn with breakable dome.

Assa 8564

With lock-back and automatic deadlocking

Latchbolt deadlocks automatically when door is closed but with special faceplate key for locking latchbolt into lockcase. Light springs for use without lever handles.



Striking plate



Please note that striking plates has to be ordered separately.

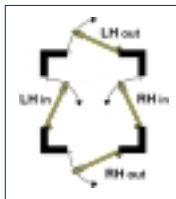
See page 35 for further information.

2800

For use with
lever handle

Assa 8561 and 8562

Emergency nightlatches



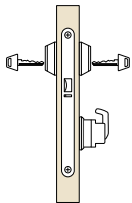
Application

Locks for exit doors offering an automatic deadlocking and at the same time unrestricted exit in an emergency. Suitable for emergency escape doors in hotels, factories, hospitals, schools, offices etc.

Features

- Latchbolt deadlocks automatically when door is closed. Emergency exit "break dome" thumbturn for non key-holders.
- Standard spring for use with lever handles.
- Available with either 50 mm or 70 mm backset.
- Can be included as part of a total security system including mechanical and electrical devices.
- Microswitch can be fitted in the lock to enable an alarm or other signal to be activated by use of either the escape function or key and escape function.
- Cylinder and accessories bolt through lockcase for added strength.

Function

Double cylinders + Emergency accessory		
Exterior		Interior
Key operation.		Key operation. Emergency exit breakdome thumbturn for non key-holders.

Cylinder accessories: 18256 - Set of outside cylinder ring, inside cylinder ring, cylinder screws and cylinder ring screws.
Emergency accessory: Emergency handle with green plastic dome.

Assa 8562

With lock-back and automatic deadlocking

Latchbolt deadlocks automatically when door is closed but with special faceplate key for locking latchbolt into lockcase. Strong springs for use with lever handles.



Striking plate



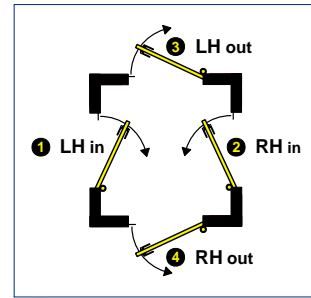
2800

Please note that striking plates has to be ordered separately.

See page 35 for further information.

Assa 1520

Escape sash lock



Application

Locks for exit doors offering a high degree of security from the outside and allowing unrestricted exit from the inside. Suitable for doors to apartments, hotel rooms, conference rooms, and commercial premises. Also other applications when rapid escape is necessary.

Features

- Hardened steel deadbolt thrown 25 mm by 90° turn of key or thumbturn.
- Latchbolt deadlocks automatically when door is closed.
- Latchbolt is reversible without opening lockcase.
- Lever handle at one side withdraws latchbolt. Lever handle on other side withdraws both latchbolt and deadbolt.
- Available with either 50 mm or 70 mm backset.
- Available with single cylinder and thumbturn or with double cylinders or single cylinder only.
- Cylinder and accessories bolt through lockcase for added strength.
- Extra sturdy construction for heavy duty use.
- Latches and deadbolt chromium plated.
- Split Follower Lock: incorporates different and separate functions on either side of the door.

Handing

The 1520 provides different functions on the inside and outside. Although the latchbolt can be reversed (as for all Assa Modular Locks), the internal follower mechanism cannot be changed. Therefore, when specifying these locks both the door handing and whether the door opens inwards or outwards must be stated.

Spindles

Special spindles, as shown below, must be used where lever handles are fitted to Assa Split Follower Locks. Assa lever handles are recommended. If other lever handles are to be used, contact Assa representative for advice. Assa emergency accessories have a fixed spindle which must be cut to length.

	For standard handles	43 mm	805073
	For thicker doors	53 mm 63 mm	805074 805077

Striking plate

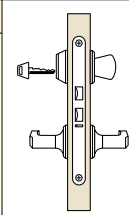


Please note that striking plates has to be ordered separately.

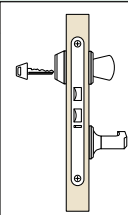
See page 35 for further information.

2800

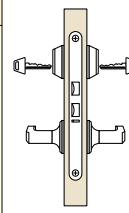
Function Split Spindle lock

Single cylinder and thumbturn		
Exterior		Interior
Key operates deadbolt and latchbolt. Lever handle retracts latchbolt.		Turn operates deadbolt and latchbolt. Lever handle retracts both deadbolt and latchbolt.

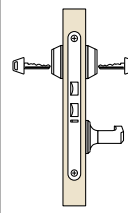
Cylinder accessories: 256 - Set of outside cylinder ring, thumbturn, cylinder screws and thumbturn screws.

Single cylinder and thumbturn - Single handle		
Exterior		Interior
Key operates deadbolt and latchbolt. Latchbolt automatically deadlocked.		Thumbturn operates deadbolt and latchbolt. Lever handle retracts both deadbolt and latchbolt.

Cylinder accessories: 256 - Set of outside cylinder ring, thumbturn, cylinder screws and thumbturn screws.

Double cylinders		
Exterior		Interior
Key operates deadbolt and latchbolt. Lever handle retracts latchbolt.		Key operates deadbolt and latchbolt. Lever handle retracts both deadbolt and latchbolt.

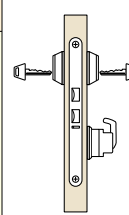
Cylinder accessories: 18256 - Set of outside cylinder ring, inside cylinder ring, cylinder screws and cylinder ring screws.

Double cylinders - Single handle		
Exterior		Interior
Key operates deadbolt and latchbolt. Latchbolt automatically deadlocked.		Key operates deadbolt and latchbolt. Lever handle retracts latchbolt only.

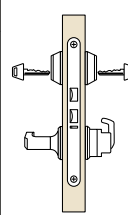
Cylinder accessories: 18256 - Set of outside cylinder ring, inside cylinder ring, cylinder screws and cylinder ring screws.

The 1520 can be supplied in a variety of options to suit different requirements. To specify please quote reference and description as shown.

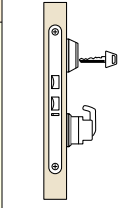
Function Emergency Split Spindle lock

1520/4		
Exterior		Interior
Key operates deadbolt and latchbolt. Latchbolt automatically deadlocked.		Key operates deadbolt and latchbolt. Emergency exit breakdome handle for non key-holders.

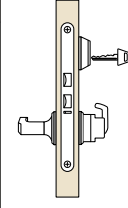
Cylinder accessories: 18256 - Set of outside cylinder ring, inside cylinder ring, cylinder screws and cylinder ring screws.
Emergency accessory: Emergency handle with green plastic dome.

1520/28		
Exterior		Interior
Key operates deadbolt and latchbolt. Lever handle retracts latchbolt.		Key operates deadbolt and latchbolt. Emergency exit breakdome handle for non key-holders.

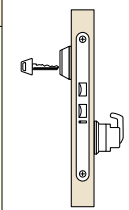
Cylinder accessories: 18256 - Set of outside cylinder ring, inside cylinder ring, cylinder screws and cylinder ring screws.
Emergency accessory: Emergency handle with green plastic dome.

1520/14		
Exterior		Interior
No access at any time. Latchbolt automatically deadlocked.		Key operates deadbolt and latchbolt. Emergency exit breakdome handle for non key-holders.

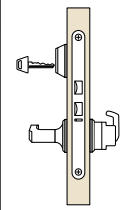
Cylinder accessories: 2256 - Set of outside blind rose, inside cylinder ring, cylinder ring screws and cylinder screws.
Emergency accessory: Emergency handle with green plastic dome.

1520/29		
Exterior		Interior
Lever handle retracts latchbolt only.		Key operates deadbolt and latchbolt. Emergency exit breakdome handle for non key-holders.

Cylinder accessories: 2256 - Set of outside blind rose, inside cylinder ring, cylinder ring screws and cylinder screws.
Emergency accessory: Emergency handle with green plastic dome.

1520/15		
Exterior		Interior
Key operates deadbolt and latchbolt. Latchbolt automatically deadlocked.		Emergency exit breakdome handle for non key-holders.

Cylinder accessories: 2356 - Set of outside cylinder ring, inside blindrose, cylinder screws and cylinder ring screws.
Emergency accessory: Emergency handle with green plastic dome.

1520/30		
Exterior		Interior
Key operates deadbolt and latchbolt. Lever handle retracts latchbolt only.		Emergency exit breakdome handle for non key-holders.

Cylinder accessories: 2356 - Set of outside cylinder ring, inside blindrose, cylinder screws and cylinder ring screws.
Emergency accessory: Emergency handle with green plastic dome.

The 1520 may be fitted with the Assa breakdome emergency accessories on the inside in the following variations.

Assa 504, 506 and 509

Escape double nightlatches



Application

Internal double night latch with automatic deadlocking. Suitable for any kind of location where automatic deadlocking is required such as electrical rooms. Often combined with 9787 or 9788 in entrances. Suitable for doors to apartments, hotel rooms, conference rooms, and commercial premises. Also other applications when rapid escape is necessary.

Features

- Upright mortice locking latch with cylinder outside and blind rose. For use when automatic deadlocking is required during controlled periods.
- Faceplate snib is used for lockback.
- Available with either 50 mm or 70 mm backset.
- Cylinder and accessories bolt through lockcase for added strength.
- Key can only be removed in locked position.
- Extra sturdy construction for heavy duty use.
- Latchbolts chromium plated.
- Split Follower Lock; incorporates different and separate functions on either side of the door.

Striking plate



Please note that striking plates has to be ordered separately.

See page 35 for further information.

Function Escape double nightlatch

Class room function		
Exterior		Interior
Upper latchbolt automatically deadlocked. Key retracts both latchbolts. Lever handle retracts lower latchbolt.		Lever handle retracts both latchbolts. Upper latchbolt held back by snib in faceplate.

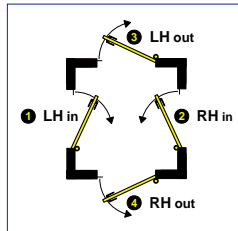
Cylinder accessories: 2356 - Set of outside cylinder ring, inside blindrose, cylinder screws and cylinder ring screws.

Handing

The split-spindle lockcases provide different functions on the inside and outside.

Although the latchbolt can be reversed (as for all Assa Modular Locks), the internal follower mechanism cannot be changed.

Therefore, when specifying these locks both the door handing and whether the door opens inwards or outwards must be stated.



Spindles

Special spindles, as shown below, must be used where lever handles are fitted to Assa Split Follower Locks. Assa lever handles are recommended.

If other lever handles are to be used, contact Assa representative for advice. Assa emergency accessories have a fixed spindle which must be cut to length.

	For standard handles	43 mm	805073
	For thicker doors	53 mm 63 mm	805074 805077

Assa 506 Function Escape double nightlatch

Deadlocking with key lock-back

Latchbolt deadlocks automatically when door is closed. Key for locking latchbolt into lockcase.



Class room function		
Exterior		Interior
Key retracts both latchbolts. Lever handle retracts lower latchbolt. Upper latchbolt automatically deadlocked.		Lever handle retracts both latchbolts. Upper latch can be locked back by token-key at frontend.

Cylinder accessories: 2356 - Set of outside cylinder ring, inside blindrose, cylinder screws and cylinder ring screws.

Assa 509 Function Escape double nightlatch

Deadlocking with key lock-back

Cylinder key controls upper latchbolt lock-back.



Class room function		
Exterior		Interior
Key retracts both latchbolts. Lever handle retracts lower latchbolt. Upper latchbolt automatically deadlocked.		Key retracts both latchbolts, but can also set upper latchbolt in lock-back position. Lever handles retract both latchbolts.

Cylinder accessories: 18256 - Set of outside cylinder ring, inside cylinder ring, cylinder ring screws and cylinder screws.

Assa 566

Roller latch



Application

Locks which are particularly suitable for inner doors, push and sliding doors, shops and entrance doors.

Features

- Steel deadbolt thrown 21 mm by 90° turn of key or thumbturn.
- Key can be removed in locked or unlocked position.
- Extra sturdy construction for heavy duty use.
- Deadbolt and roller latch are chromium plated.
- Available with either 50 mm or 70 mm backset.
- Available with double cylinders or single cylinder only or with single cylinder and thumbturn.
- Cylinder and accessories bolt through lockcase for added strength.
- Hardened steel deadbolt thrown 21 mm by 90° turn of key or thumbturn.

Striking plate



2866

Please note that striking plates has to be ordered separately.

See page 35 for further information.

Function

Single cylinder and thumbturn		
Exterior		Interior
Key operates deadbolt and roller latch.		Thumbturn operates deadbolt and roller latch.

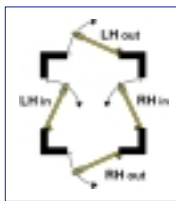
Cylinder accessories: 256 - Set of outside cylinder ring, thumbturn, cylinder screws and thumbturn screws.

Double cylinders		
Exterior		Interior
Key operates deadbolt and roller latch.		Key operates deadbolt and roller latch.

Cylinder accessories: 256 - Set of outside cylinder ring, thumbturn, cylinder screws and thumbturn screws.

Assa 1498

Mortice latches



Application

Latch for inner doors where locking is not required.

Features

- Latch for inner doors.
- Chromium plated latchbolt reversible without opening lockcase.
- Extra sturdy construction for heavy duty use.
- No locking device. For use with lever handles.
- Available with either 50 mm or 70 mm backset.

Striking plate

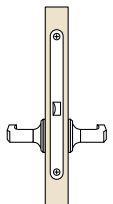


Please note that striking plates has to be ordered separately.

See page 35 for further information.

2800

Function

Passage		
Exterior		Interior
Lever handle retracts latchbolt.		Lever handle retracts latchbolt.

Cylinder accessories: NA

Finishes

Assa finishes are durable, top-quality finishes applied in the most modern automatic plating equipment. It is important, however, that surrounding environments and usage must be taken into consideration when selecting finishes.



054 Zinc-Alloy black chromated

This method provides the base material very high corrosion resistance in all outdoor environments. Zinc-Alloy black has bright brown/black finish and therefore also suitable on dark painted or dark wooden doors.



062 Zinc-Alloy yellow chromated

This method provides the base material very high corrosion resistance in all outdoor environments. Zinc-Alloy yellow chromated gives a bright brass-like finish.



057 Bright Zinc plating

Bright zinc plating provides a bright bluetinted finish. This method gives the base material good corrosion resistance in normal outdoor and indoor environments.



031 Stainless Steel

The base material consist of stainless steel which is mechanically brushed to provides a satin finish. Suitable in all environments where the demand for very high corrosion resistance is necessary. Matches installations where the rest of the hardware is in stainless steel.



013 Satin chrome plating

Satin chrome plating provides a decorative satin finish. Suitable in all normal outdoor and indoor environments where the demand for design is higher than the demand for corrosion resistance. An alternative when the rest of the hardware is of stainless steel.



020 Bright brass-like finish

A bright brass-like finish is achieved by applying ED-lacquer on the base material. The method provides the base material very high corrosion resistance, which makes it suitable for most outdoor environments.

Accessories

Assa 2896 Rim lockcase accessories



For installation of modular lockcases when the thickness of the door does not permit the use of mortice locks, e.g. ship doors of steel, bar gates or thin wooden doors.

The rim lockcase is of steel with bright zinc finish. It can be mounted by means of machine screws, rivets or by welding. Fits all modular locks with 50 mm backset.

Assa 1805 Drill proof covers



The drill proof covers are made of hardened steel.

Fits all modular locks with 50 mm backset. The recess in the door may have to be adjusted to accept the enlarged lockcase (22 mm).

Assa "ANSI" fireplates & faceplate



Special accessory plates for mounting around the cassette, and thereby increasing the lockcase thickness to conform with the ANSI A115.1 cut-out.

Together with the ANSI A115.1 faceplate the lockcase has been tested and approved for three-hour fire rating in H.M. doors.

Fits both 50 mm and 70 mm backset.

Assa Square-end faceplate



Instead of the Assa standard faceplate with rounded ends this faceplate with square ends can make it easier to prepare doors on site.

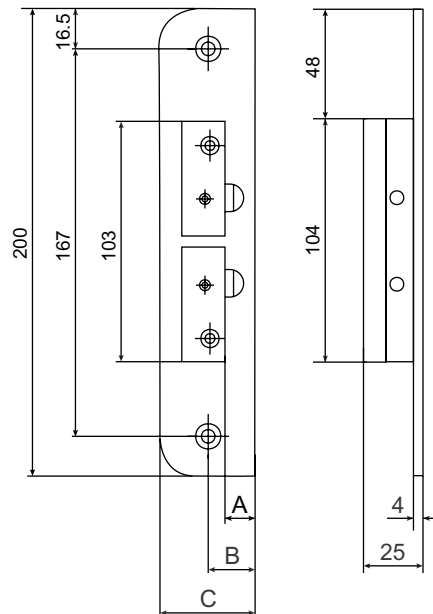
Assa 1887 security strikes

Striking plates 1887 series

Assa 1887 high security steel strike complies with Swedish Standard SS3557 class 3.

Fastened by 4 screws of which 2 are fitted at a 45 degree angle.

Suitable for all modular lockcases.



Series	A	B	C
1887-1	12,5	20,5	40
1887-2	15,5	23,5	40
1887-3	19	27	43,5
1887-4	20,5	28,5	45
1887-5	4,5	29,5	29,5

Assa 2800 standard strikes

Striking plates 2800



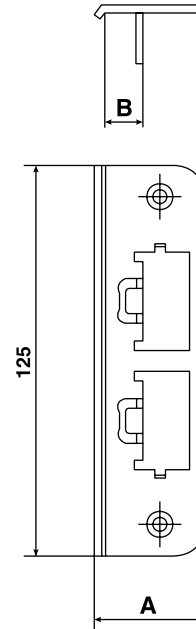
Assa 2800 anti-rattle stainless steel strike, operates with a front lip for smooth operation.

Suitable for all modular lockcases except hook-bolts.

Striking plates 2801



Assa 2801 is the same as 2800 with a dust box.



Series	A	B
2800-10	35	12
2800-11	40	18
2800-12	48	27
2800-13	38	13

Striking plates 2866-1



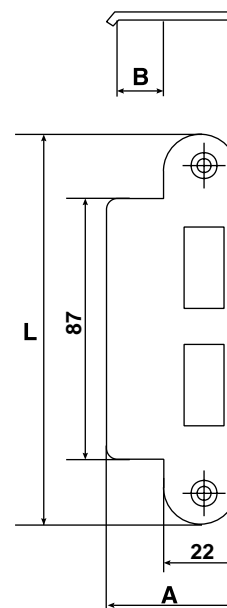
Assa 2866-1 series classic steel strike operates with a front lip for smooth operation.

Suitable for modular lockcases except hook-bolts.

Striking plates 2866-2

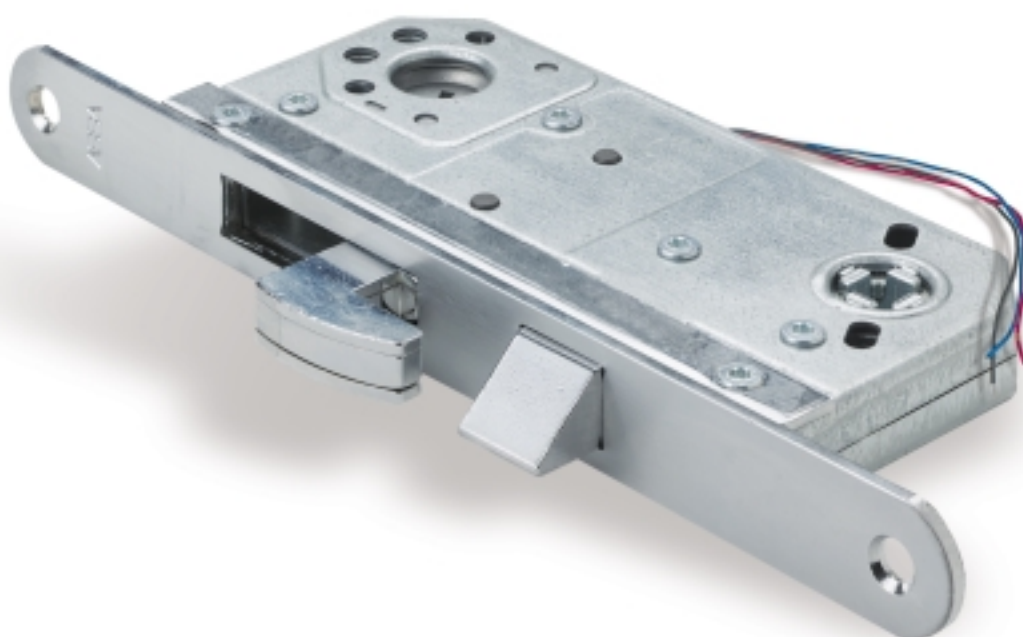


Assa 2866-2 is suitable together with Assa 566 roller latch in swinging doors.



Series	A	B	L
2866-1	33	11	127
2866-2	44	4,5	127

Microswitch description



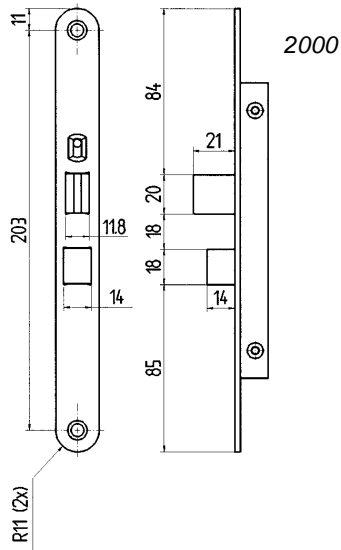
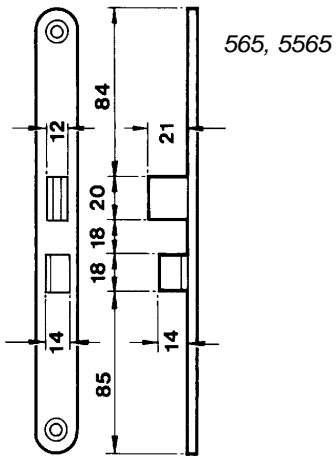
Model	Usage	Microswitch function	Lockcase
M1	Alarm by-pass	Bi-stable function. Microswitch is depressed when bolt is in withdrawn position, changes when bolt leaves withdrawn position.	8765, 9788, 7787, 9787
M3	Alarm by-pass and alarm circuit.	Bi-stable functions. Two microswitches. One is depressed at unthrown bolt. The other is depressed at thrown and deadlocked bolt.	8765, 9788, 7787, 9787
M5	Alarm circuit	Bi-stable function. Microswitch depressed at thrown and deadlocked bolt. Indication of bolt thrown and deadlocked. Changes when deadlocking is released and bolt leaves extended position.	8765, 9788, 7787, 9787, 565, 566
M6	Indication	Momentary function. Microswitch depressed and changed when opening with key or thumbturn.	560, 562, 1560, 5584, 5585, 6580, 6585
M7	Indication	Momentary function. Microswitch indicates movements of the emergency exit accessory. Microswitch depressed and changed when emergency exit accessory is used. Returns when thumbturn is released.	8560, 8561, 8562, 8564
M8	Indication	Momentary function. Microswitch indicates use of exit, key or thumbturn. Is depressed and changed in operation.	8560, 8561, 8562, 8564
M9	Indication	Momentary function. Microswitch indicates position of the cylinder latch. Is depressed and changed in operation.	560, 562, 1560, 5584, 5585, 6585, 8561, 8562
M13	Alarm by-pass and alarm circuit. Indication	Bi-stable function. Two microswitches. One is depressed at unthrown bolt. The second is depressed when thumbturn is disabled.	2000

Electrical specification: Max 30VDC, 100mA (resistive load)
 Temperature range: -40° to +85°C
 Humidity: 35-98% relative humidity, non-condensing
 Durability mechanical: Min 1,000,000 cycles
 Durability electrical: Min 100,000 cycles

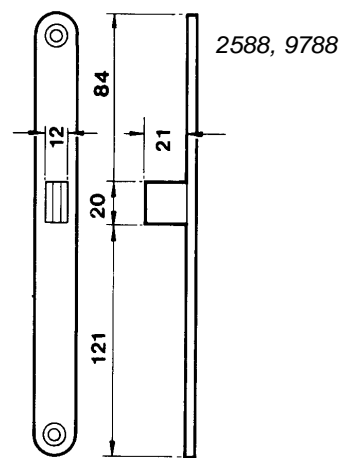
Function: Single-pole
 IP rating: IEC IP67
 Cable: Length outside lockcase approx. 200 mm 3 x 0,5 mm²
 Connections C/NO/NC: Delivered without connector

Dimensions

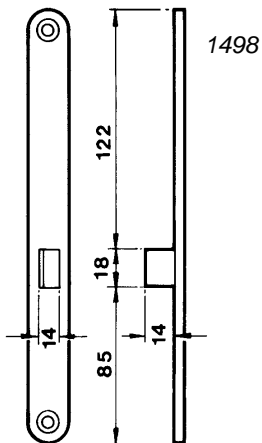
Sash lock



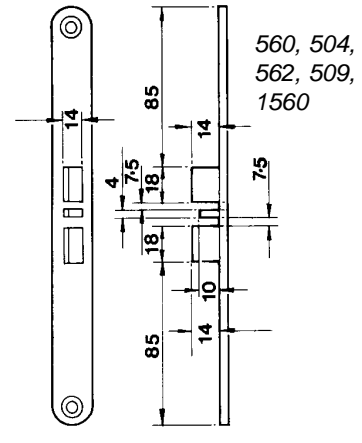
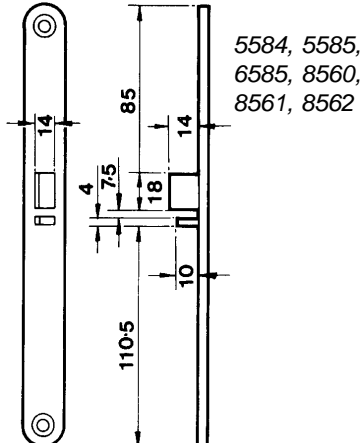
Deadlock



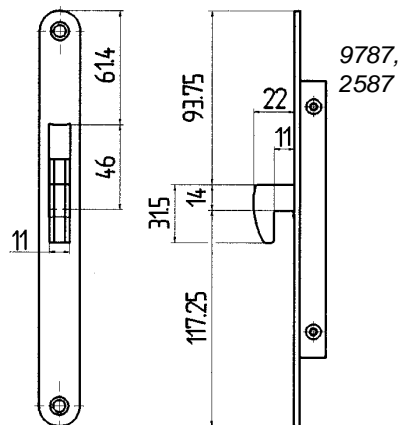
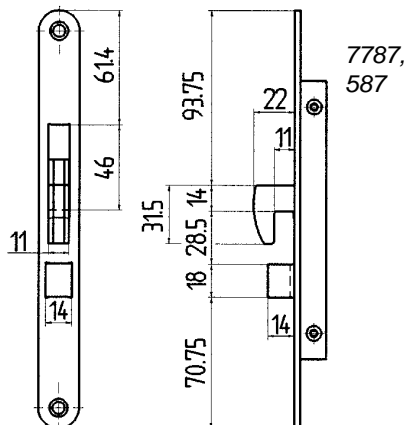
Latch



Deadlocking nightlatch



Hook-bolt lock



Lockcase Reference chart

Model	Latch	Deadbolt	Roller latch	Guardbolt	Hookbolt	Cylinder turning	Backset	Classic	Heavy Duty	Split Spindle	Available with microswitch	Security strike	Standard strike	Electric strike	Suitable for fire doors	Suitable for emergency doors	Page
587	x				x	85	50	x	x			x			x		12
7787	x				x	360	50	x	x		M1, M3, M5	x			x		13
2587					x	85	50	x	x			x					14
9787					x	360	50	x	x		M1, M3, M5	x					15
565	x	x				90	50 / 70	x	x		M5	x	x	x	x		16
8765	x	x				360	50 / 70	x	x		M1, M3, M5	x		x	x		18
2000	x	x				360	50	x	x		M13	x			x		19
2588		x				90	50	x	x			x	x	x			20
9788		x				360	50 / 70	x	x		M1, M3, M5	x	x	x			21
560	x			x			50 / 70	x	x		M6, M9		x		x		22
562	x			x			50 / 70	x	x		M6, M9		x		x		22
1560	x			x			50 / 70	x	x		M6, M9		x		x		22
5584	x			x			50 / 70	x	x		M6, M9		x	x			23
5585	x			x			50 / 70	x	x		M6, M9		x	x			23
6585	x			x			50 / 70	x	x		M6, M9		x	x	x		23
8560	x			x			50 / 70		x		M7, M8		x	x	x	x	24
8564	x			x			50 / 70		x		M7, M8		x	x		x	24
8561	x			x			50 / 70	x	x		M7, M8		x	x	x	x	25
8562	x			x			50 / 70	x	x		M7, M8		x	x		x	25
1520	x	x		x		90	50 / 70	x	x	x		x	x	x	x	x	26
504	x			x			50 / 70	x	x	x			x		x	x	28
506	x			x			50 / 70	x	x	x			x		x	x	28
509	x			x			50 / 70	x	x	x			x		x	x	28
566		x	x			90	50 / 70	x	x		M5						30
1498	x						50/70	x	x				x		x		31
565MP	x	x		x		90	50 / 70	x									8
8765MP	x	x		x		360	50	x									8
2000MP	x	x		x		360	50	x									8

Assa AB is an ASSA ABLOY Group company. Assa AB develops, manufactures and markets locking and security systems for doors and windows.

The products are well designed, of good quality and provide high security.

The ASSA ABLOY Group is the world's leading manufacturer and supplier of locks and associated products, dedicated to satisfying end-user needs for security, safety and convenience.

The logo for ASSA, featuring the word "ASSA" in a bold, blue, sans-serif font with a registered trademark symbol (®) to the upper right of the letter "A".

An ASSA ABLOY Group company

Sweden: Assa AB, P.O. Box 371, SE-631 05 Eskilstuna - Phone +46 16 17 70 00, Telefax +46 16 17 72 10
www.assa.se - e-mail export.eskilstuna@assa.se

Photo Peder Ek

M0171.0102.3000